

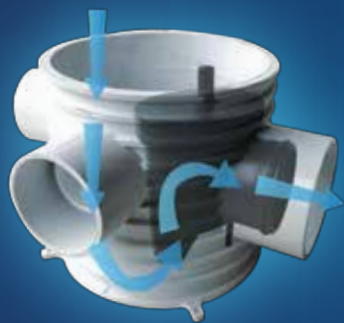


CHEZY SUPERIOR FLOOR TRAP SYSTEM BS EN 1253 : 2015

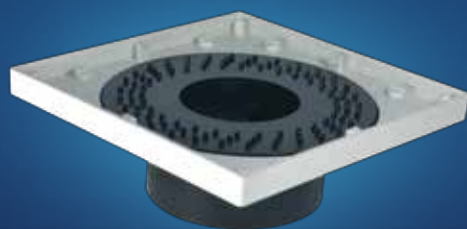
**THE BEST FOR
EVERY HOME**



**TOP ACCESS
FLOOR TRAP**



**SIDE FLOW
CONCEALED FLOOR TRAP**



BACK FLOW DEVICE



**ALL ACCESS
FLOOR TRAP**

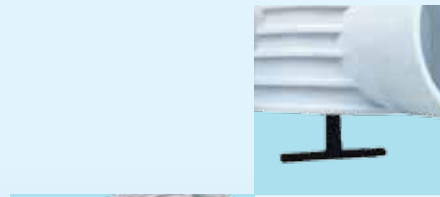


INTRODUCTION TO CHEZY INDUSTRIES

We are quality manufacturers of the **First Inspection Chambers for housing** in Malaysia.

Our director, a mechanical engineer introduced the First Top Access Plastic Floor Trap in Malaysia. He has been involved in the design and manufacturing of 5 different Floor Trap Systems for sanitary plumbing use since then.

In his words, **“The Chezy Floor Traps were developed to overcome the pitfalls and problems of existing Floor Trap Systems in the market.** Painstakingly, we have removed these issues one by one from our design. This has resulted in a **much more superior design as well as a functional and great Floor Trap System for the sanitary plumbing industry.”**



“ The end of all your Floor Trap problems. The Chezy Floor Trap Systems were developed to overcome the pitfalls and problems of existing floor trap systems in the market. ”

CONTENTS

Chezy Floor Trap Gratings	04
---------------------------	----

Chezy All Access Floor Trap	08
-----------------------------	----

Chezy Top Access Floor Trap	12
-----------------------------	----

Chezy Side Flow Concealed Floor Trap	16
--------------------------------------	----

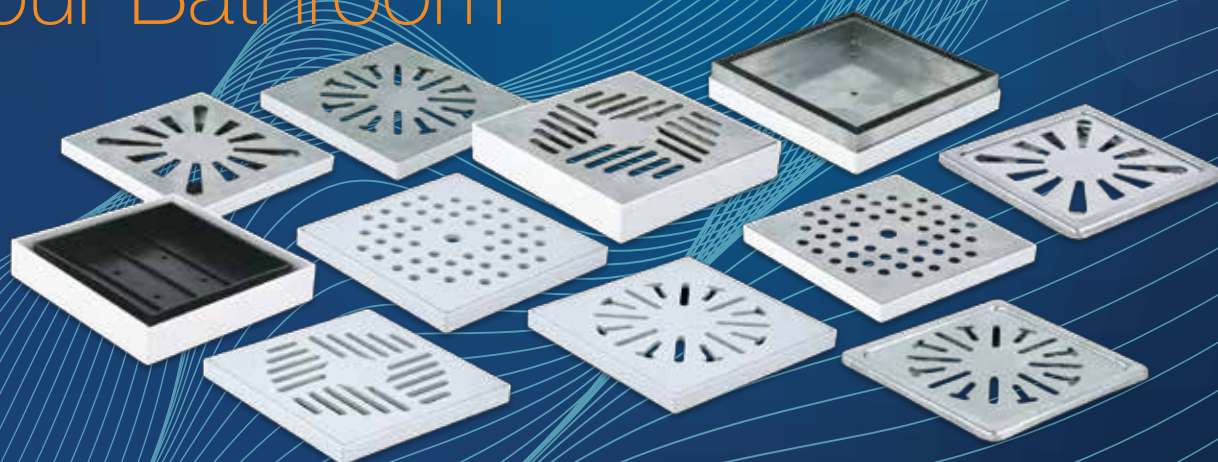
Chezy Conventional Floor Trap	19
-------------------------------	----

Chezy Bottle Floor Trap	20
-------------------------	----

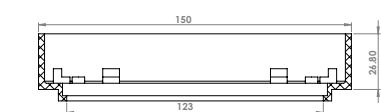
Chezy Floor Trap Accessories	23
------------------------------	----

CHEZY FLOOR TRAP GRATINGS

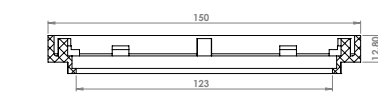
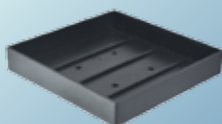
Add Flair To Your Bathroom



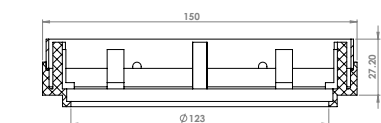
TILE TRAY & COLLAR SPECIFICATIONS



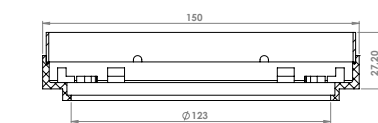
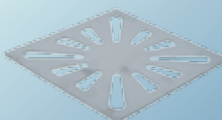
PLASTIC TILE
TRAY COLLAR
WITH TILE TRAY



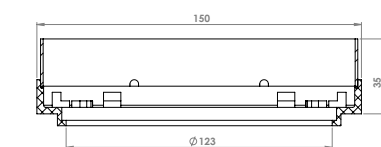
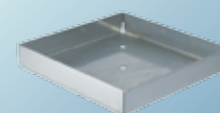
STANDARD
PLASTIC
COLLAR FOR
ALL GRATINGS



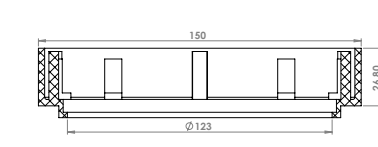
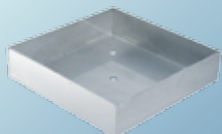
COLLAR WITH
METAL LINING
AND METAL
GRATING



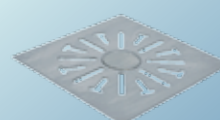
PLASTIC
COLLAR WITH
METAL LINING
FOR METAL TRAY



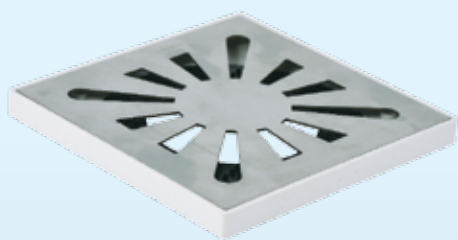
PLASTIC
COLLAR WITH
METAL LINING
FOR MARBLE
TRAY



DEEP PLASTIC
COLLAR



HIGH QUALITY 6" STAINLESS STEEL FLOOR TRAP GRATINGS



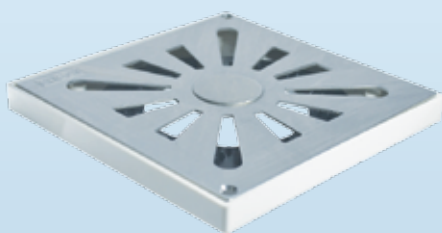
Product code: SG4-PC

Exceptional quality stainless steel and polished finish grating with plastic collar.
Color: Silver
Size: 6" x 6" (150mm x 150mm)
Load: 300 KG



Product code: SG1-PCD

High quality stainless steel and aesthetically pleasing grating with plastic collar.
Color: Silver
Size: 6" x 6" (150mm x 150mm)
Load: 300 KG



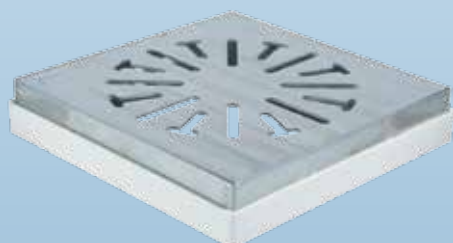
Product code: SGW4-PC

Exceptional quality stainless steel and polished finish grating with plastic collar and washing machine plug.
Color: Silver
Size: 6" x 6" (150mm x 150mm)
Load: 300 KG



Product code: SGW1-PCD

High quality stainless steel and aesthetically pleasing grating with plastic collar and washing machine plug.
Color: Silver
Size: 6" x 6" (150mm x 150mm)
Load: 300 KG



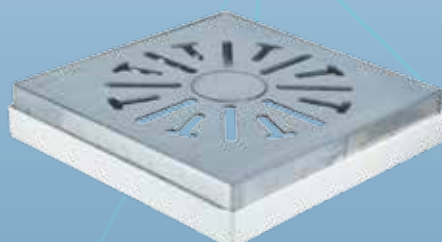
Product code: SG2-(L)-PC

High quality stainless steel and well-designed grating and lining with plastic collar.
Color: Silver
Size: 6" x 6" (150mm x 150mm)
Load: 300 KG



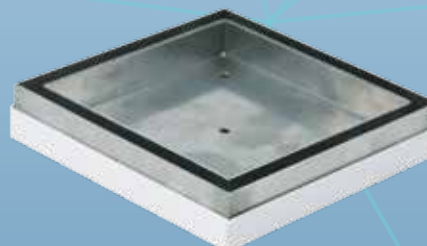
Product code: ST-PCT

Sleek looking high quality stainless steel tile tray with plastic collar.
Color: Silver
Size: 6" x 6" (150mm x 150mm)
Load: 300 KG



Product code: SGW2-(L)-PC

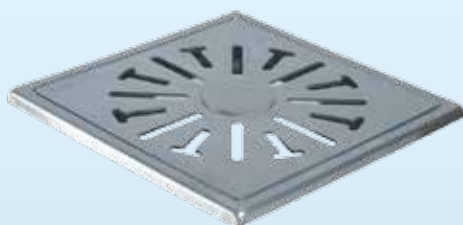
High quality stainless steel and well-designed grating with plastic collar and washing machine plug.
Color: Silver
Size: 6" x 6" (150mm x 150mm)
Load: 300 KG



Product code: ST-(L)-PCT

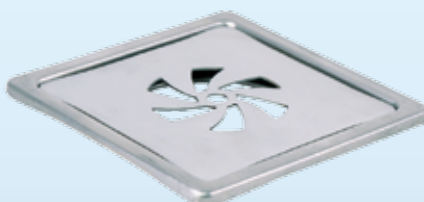
Sleek looking high quality stainless steel lining and tile tray with plastic collar.
Color: Silver
Size: 6" x 6" (150mm x 150mm)
Load: 300 KG

HIGH QUALITY 6" STAINLESS STEEL FLOOR TRAP GRATINGS



Product code: SGW2-SC

Elegant design stainless steel grating and collar with washing machine plug.
Color: Silver
Size: 6" x 6" (150mm x 150mm)
Load: 300 KG



Product code: SG5-SC

Elegant design stainless steel grating and collar.
Color: Silver
Size: 6" x 6" (150mm x 150mm)
Load: 300 KG



Product code: (ML)-PCT

High quality stainless steel lining and marble tile tray with plastic collar.
Color: Silver
Size: 6" x 6" (150mm x 150mm)
Load: 300 KG

HIGH QUALITY 6" ABS PLASTIC FLOOR TRAP GRATINGS



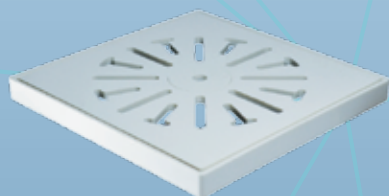
Product code: PG2-PC

Modern design ABS grating and plastic collar.
Color: White
Size: 6" x 6" (150mm x 150mm)
Load: 300 KG



Product code: PG1-PCD

High quality ABS plastic superior finish grating with plastic collar.
Color: Black
Size: 6" x 6" (150mm x 150mm)
Load: 300 KG



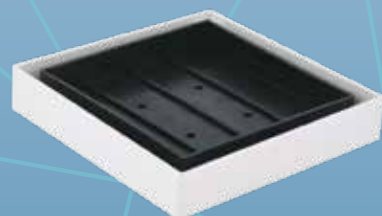
Product code: PGW2-PC

Modern design ABS grating and plastic collar and washing machine plug.
Color: White
Size: 6" x 6" (150mm x 150mm)
Load: 300 KG



Product code: PGW1-PCD

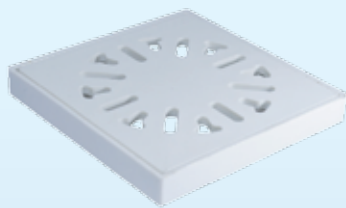
High quality ABS plastic superior finish grating with plastic collar and washing machine plug.
Color: Black
Size: 6" x 6" (150mm x 150mm)
Load: 300 KG



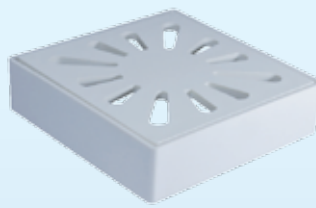
Product code: PT-PCT

Modern design plastic tile tray with plastic collar.
Color: Black
Size: 6" x 6" (150mm x 150mm)
Load: 300 KG

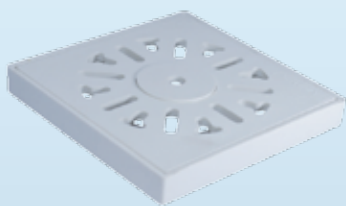
HIGH QUALITY 4" FLOOR TRAP GRATINGS



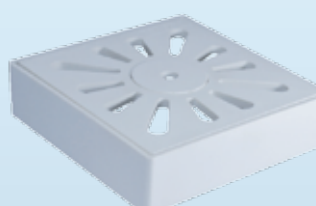
Product code: 4"PG2-4"PC
 High quality ABS plastic grating and plastic collar.
 Color: White
 Size: 4" x 4" (100mm x 100mm)
 Load: 300 KG



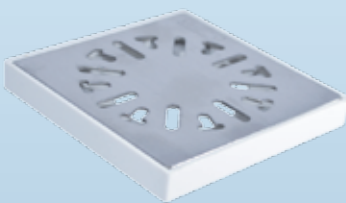
Product code: 4"PG4-4"PCD
 High quality ABS plastic grating with plastic collar.
 Color: White
 Size: 4" x 4" (100mm x 100mm)
 Load: 300 KG



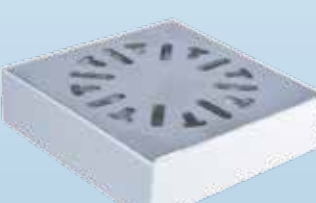
Product code: 4"PGW2-4"PC
 High quality ABS plastic grating and plastic collar and washing machine plug.
 Color: White
 Size: 4" x 4" (100mm x 100mm)
 Load: 300 KG



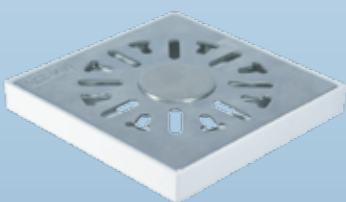
Product code: 4"PGW4-4"PCD
 High quality ABS plastic grating with plastic collar and washing machine plug.
 Color: White
 Size: 4" x 4" (100mm x 100mm)
 Load: 300 KG



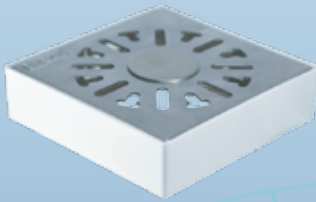
Product code: 4"SG2-4"PC
 High quality stainless steel grating with plastic collar.
 Color: Silver
 Size: 4" x 4" (100mm x 100mm)
 Load: 300 KG



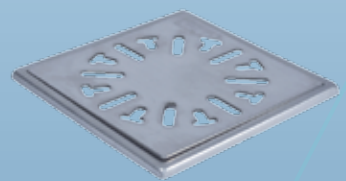
Product code: 4"SG2-4"PCD
 High quality stainless steel grating with plastic collar.
 Color: Silver
 Size: 4" x 4" (100mm x 100mm)
 Load: 300 KG



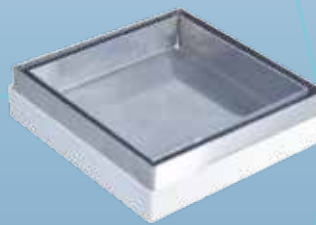
Product code: 4"SGW2-4"PC
 High quality stainless steel grating with plastic collar and washing machine plug.
 Color: Silver
 Size: 4" x 4" (100mm x 100mm)
 Load: 300 KG



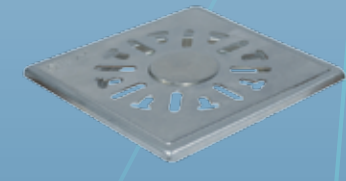
Product code: 4"SGW2-4"PCD
 High quality stainless steel grating with plastic collar and washing machine plug.
 Color: Silver
 Size: 4" x 4" (100mm x 100mm)
 Load: 300 KG



Product code: 4"SG2-4"SC
 Elegant design with high quality stainless steel grating and collar.
 Color: Silver
 Size: 4" x 4" (100mm x 100mm)
 Load: 300 KG



Product code: 4"ST-4"(L)PCT
 Sleek looking high quality stainless steel tile tray and lining.
 Color: Silver
 Size: 4" x 4" (100mm x 100mm)
 Load: 300 KG



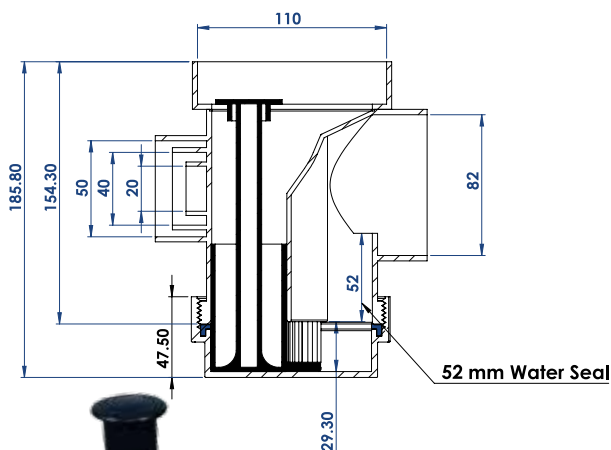
Product code: 4"SGW2-4"SC
 Elegant design with high quality stainless steel grating and collar with washing machine plug.
 Color: Silver
 Size: 4" x 4" (100mm x 100mm)
 Load: 300 KG

CHEZY ALL ACCESS FLOOR TRAP



DIMENSIONS

All Access Floor Trap



THE END TO ALL YOUR FLOOR TRAP PROBLEMS

This innovative patented floor trap by Chezy is used below the floor slab to remove water from the floor surface. The body of the floor trap has side connections for the basin, long bath, washing machine, kitchen sink and etc.

This floor trap has a screwed on cap at the bottom of the body which can be unscrewed for access to the outgoing pipe for rodding in case of blockages.

The ingenious Chezy All Access Floor Trap is the only floor trap in the market that can be serviced from **both the Top of the bathroom and Below the slab, that is, you can service either from the top or bottom of the floor trap**. This design eliminates problems during site installation issues like cement dropping into top access floor traps (this is a big issue with installers).

The Chezy All Access Floor Trap becomes a conventional floor trap when the baffled container in the floor trap is not used. Hence, it can be used as a conventional floor trap or as a top access when the baffle container is used.

The 51mm depth of water seal in the floor trap prevents foul smell and rodents entering the bathroom and the high flow rates in excess of 80 litres/min have been certified and tested to BS EN 1253 to show that it passes and complies as a floor trap to be used with side inlets. **A perfect floor trap, addressing all the problems of top access and conventional floor traps.**

WHY THE CHEZY ALL ACCESS™ FLOOR TRAP?

There have been numerous complaints from plumbers (installers), developers and house owners with the existing floor traps available in the market. The main issues have been foul smell in the bathroom and maintenance issues during installation and after the house owner moves in. The Chezy All Access™ floor traps eliminates all these problems and gives you peace of mind.

Chezy has developed a new floor trap that can both be serviced from the top (bathroom) or from below (floor slab), hence the name All Access™ (Top & Bottom Access™) Floor Traps.

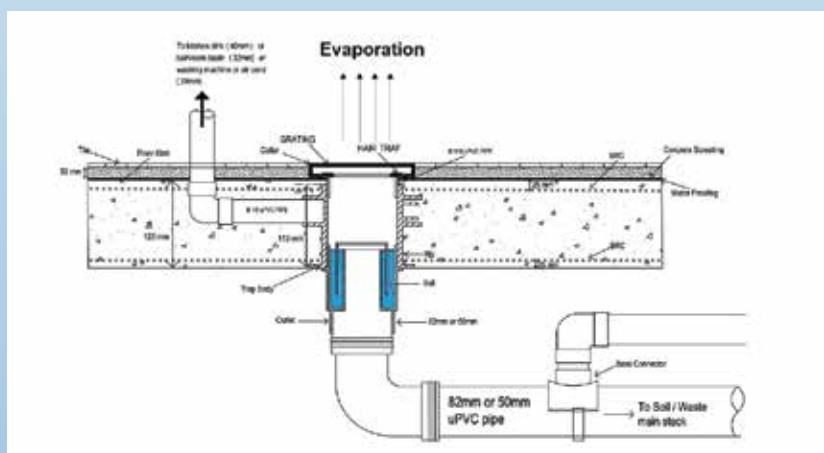
With the ingenious extendable container, this design incorporates a water seal of 50mm and flow rates in excess of 80 litres/min. This new floor trap is third-party certified and exceeds all requirements of BS EN 1253 (gullies for buildings : Trapped floor gullies with a water seal depth of 51mm)



THE PROBLEMS WITH FLOOR TRAPS

FOUL SMELL

This is a result of the loss of the water seal in the floor trap, either by evaporation of the water in the floor trap or the failure of the rubber ring used to retain the water in the trap.



EVAPORATION

For top access floor traps, the water seal is very close to the heat source (the bathroom may be warm). This facilitates evaporation and is more pronounced if the trap is embedded in the slab, the distance of the top of the water seal is only about 100mm to 120mm from the heat source. In the event that the water in the trap is not topped up by usage, evaporation of the water in the trap will result in the loss of the seal, thus allowing foul smell entering the bathroom.

RUBBER / RUBBER RINGS

It is very important that contact areas that are in touch with the rubber is clean. Dirty surfaces will result in the rubber not having a good sealing effect. This will allow water to escape, thus allowing the loss of water in the water seal and will eventually result in the total loss of the seal and allow foul smell to enter the bathroom. Cement, debris and etc are commonly dropped into the floor trap during construction, this is a common problem causing debris, etc, to prevent a good seal between the rubber and contact surface.

MAINTENANCE

TOP ACCESS FLOOR TRAPS

During the construction period (tiling), sometimes concrete is thrown into the trap. This is often difficult for the plumber to clear. Once cleared, the trap usually works well.

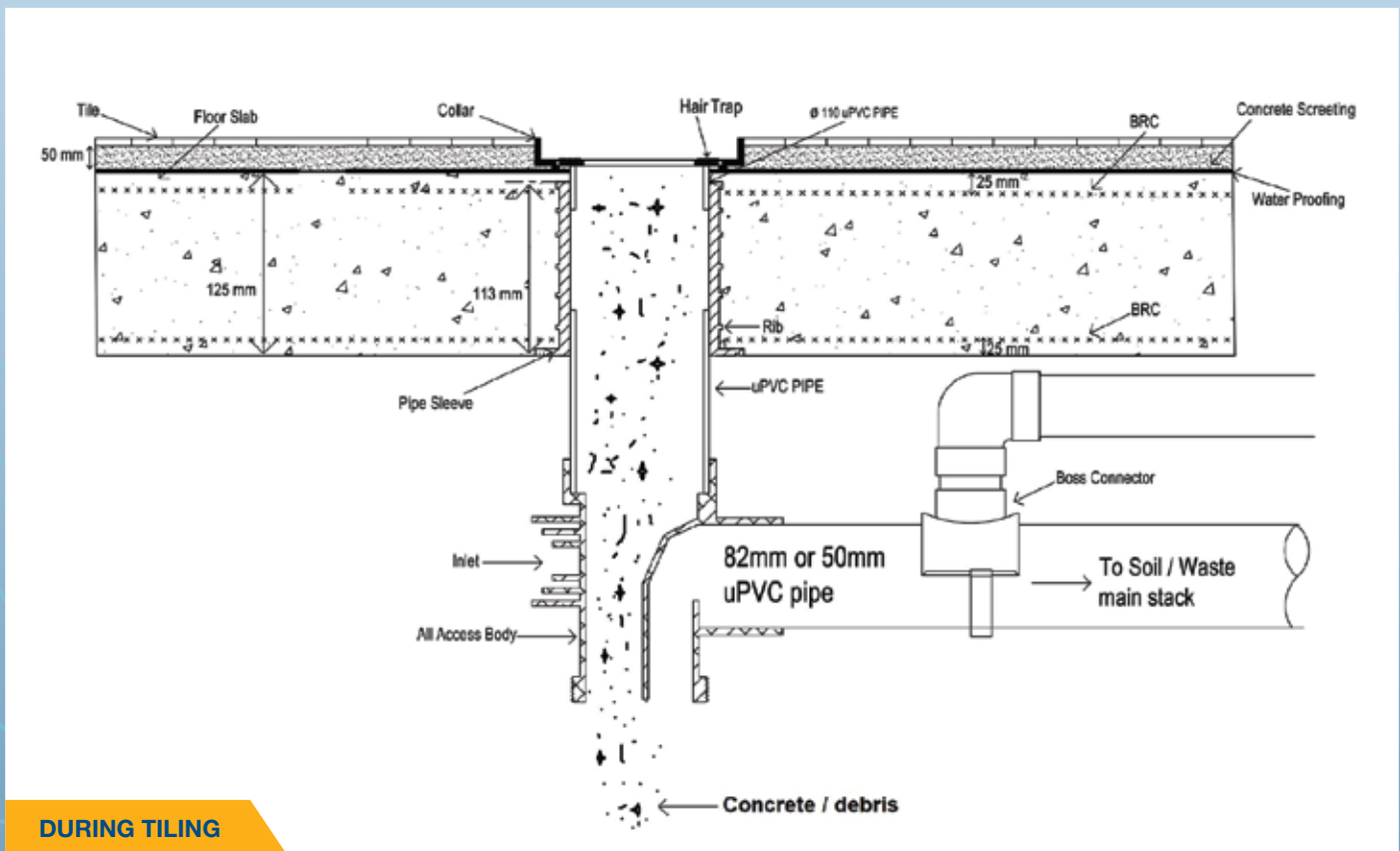
As the water seal is near the top (grating), the house owner does not have problems servicing and maintaining the floor trap, as he does not need to go below the floor slab to service the floor trap. Over all depth of the floor trap is about 200mm below the grating. During tiling there is always a misalignment of the collar with the body. This will result in about 20% of the bell or insert in top access floor traps being difficult to remove during maintenance. Hence, it is important to have an opening of greater than 120mm in the collar.

CONVENTIONAL FLOOR TRAPS

These conventional floor traps have excess from the bottom of the trap for maintenance purposes. These floor traps are always placed below the floor slab. Being below the slab, they are further from the heat source. The water in the trap lasts longer in the trap, providing a longer protection against the entrance of foul smell into the bathroom.

Another advantage is that during the construction process the bottom cap is not used, allowing debris and cement to drop out of the trap. This makes life for the installer easier in terms of maintenance at the end of the project.

A disadvantage is that these traps are at least 300mm or more from the grating and are difficult to maintain in case of blockages by the house owner. Access can only be made from the bottom of the trap which is below the floor slab for maintenance, **this is a big issue in cases like condominiums and apartments.**



DURING TILING

FEATURES OF CHEZY ALL ACCESS™ FLOOR TRAP

In other words, the best of both worlds (all advantages of both the top access and conventional floor traps) with none of their disadvantages.

It is 'Perfection At It's Very Best'.



The Benefits of CHEZY ALL ACCESS™ FLOOR TRAP

It has the benefits of being able to be serviced or maintained from the top (bathroom) or from below the floor slab.

It has no issues with debris or cement falling into the floor trap during the tiling process by not using the cap until after tiling.

Ease of maintenance after the owner has occupied the unit, just remove the grating and pull the adjustable baffle container out. Clean and replace back, it's as easy as that!

No back-flow issues at all, high flow rates and is at least 250mm from the grating.

It is further from the heat source, this will result in a longer period of protection of the water seal from evaporation.

Ideal for transfer slab use. Distance from grating to the trap can be in excess of 1 metre. This is solved by using a long handle on the baffle container.

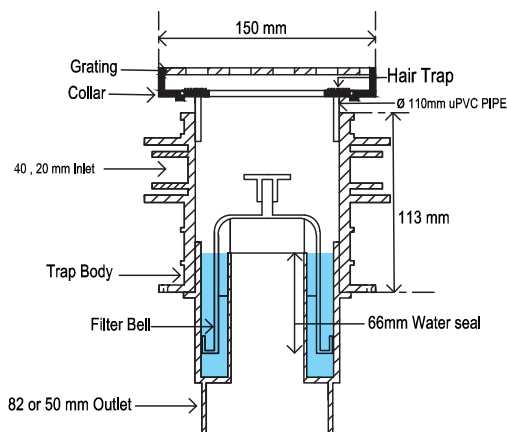


CHEZY TOP ACCESS FLOOR TRAP



TOP ACCESS FLOOR TRAP

For 150mm Floor Slab

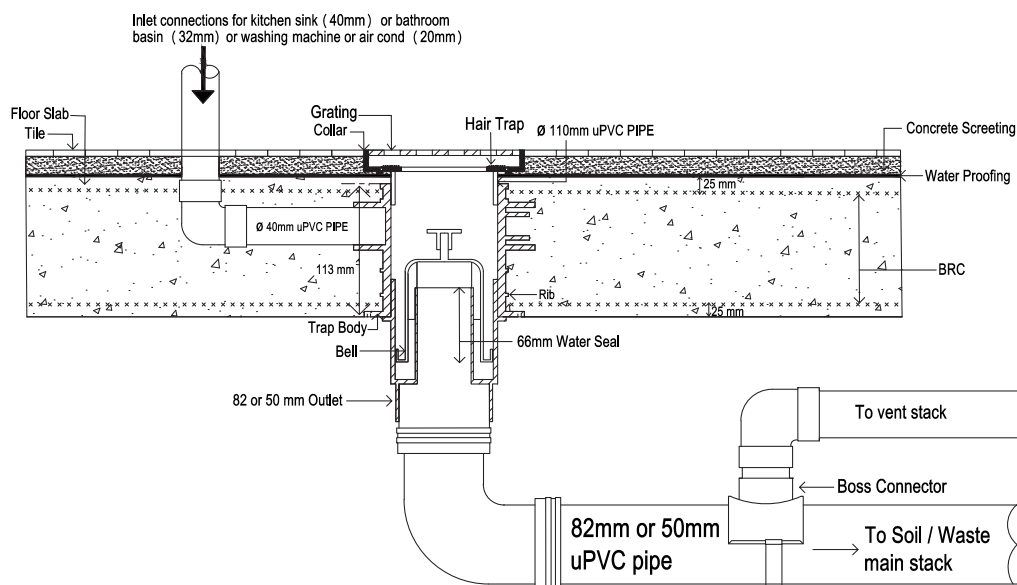


Top Access Floor Trap
for 150mm floor slab

Floor traps are used **and installed in the floor slab** to remove water from the floor in areas like the bathroom, kitchen, yard and etc. Additionally, these traps incorporate a water seal to prevent ingress of foul smell, insects and rodents from the main stack.

All floor traps in Malaysia are manufactured to BS EN 1253, **Trapped floor gullies with a depth water seal of at least 50mm**, which states that floor traps must allow a minimum flow rate of 48 litres/min through the grating and **if side connections are made for basins, kitchen sinks, washing machine and etc; floor traps shall have a flow rate in excess of 80 litres/min.**

Maintenance is easy and is done from the top. Remove grating and pull Bell out. This will give direct access to the outlet for rodding to clear blockages. No need to go below the slab.

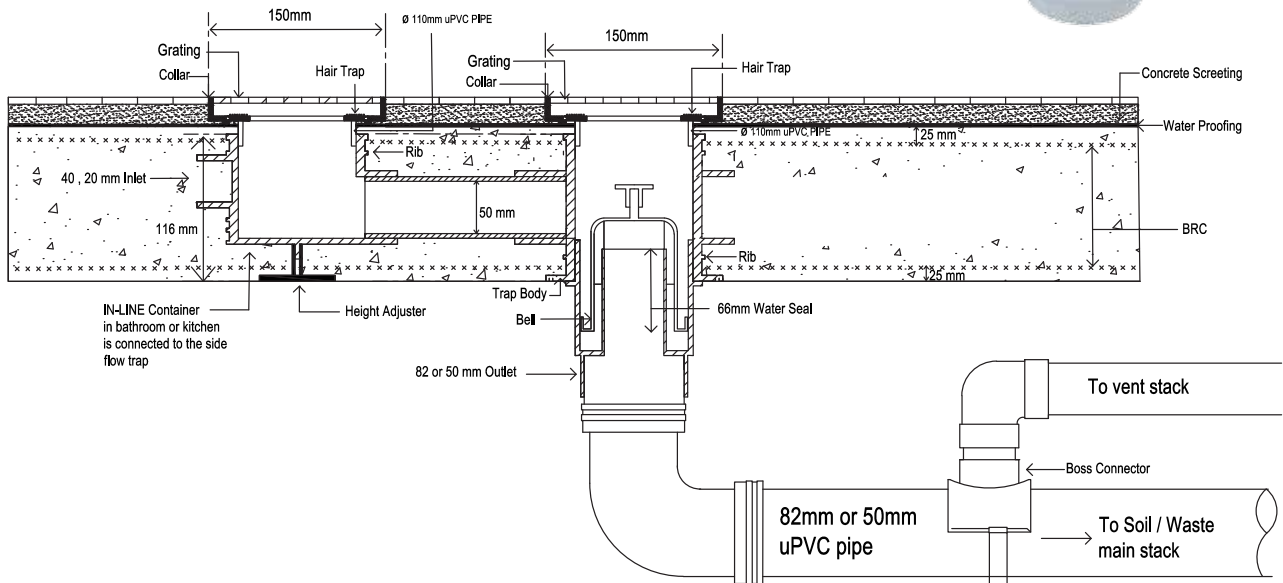


The main reason that top access floor traps are used is that they allow maintenance of the trap from the bathroom. These top access floor traps are placed in the floor slab. The distance of the floor trap is close to the grating, hence it is easy to service the floor trap and clear any blockages that may occur in the outlet pipes, from the top itself, without going below the floor slab.



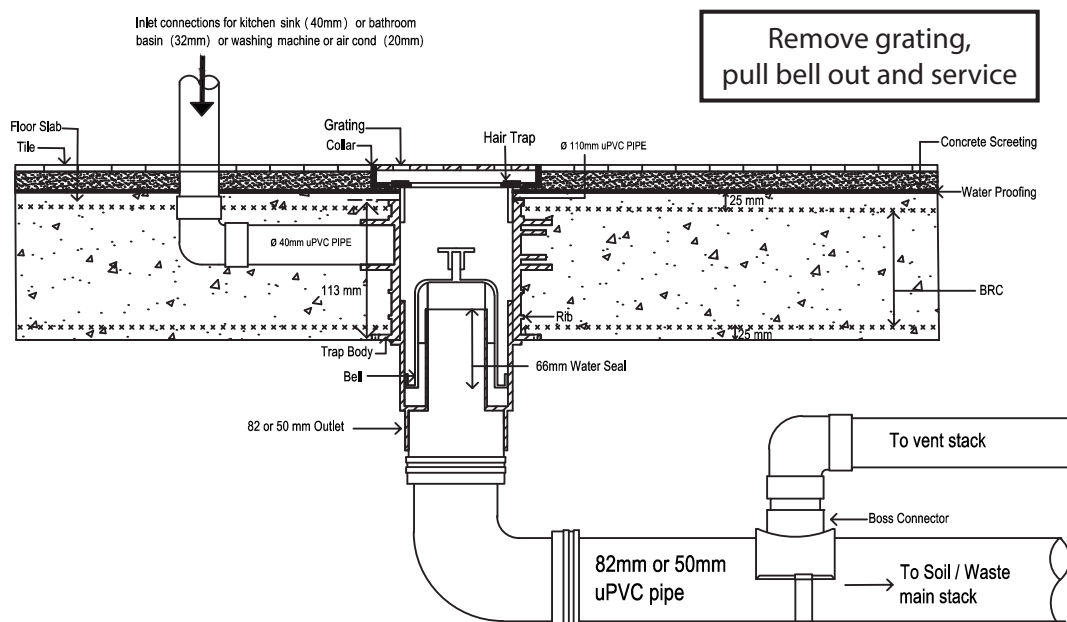
INSTALLATION DRAWING

Top Access Floor Trap with Chezy In-Line Container

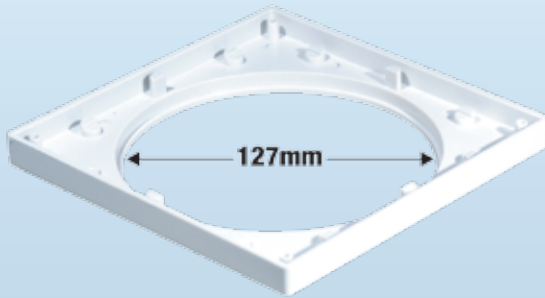


INSTALLATION & MAINTENANCE DRAWING

Top Access Floor Trap for 150mm Floor Slab



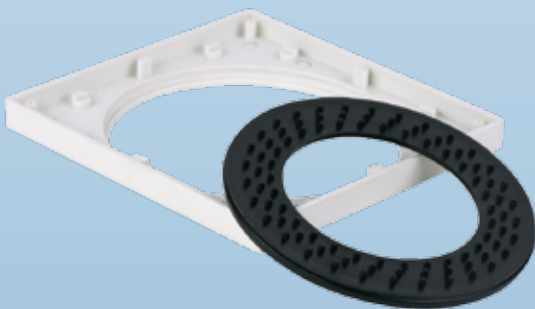
THE REASONS WHY CHEZY TOP ACCESS FLOOR TRAPS BEAT ALL COMPETITORS IN THE MARKET - HANDS DOWN.



LARGE OPENING IN THE COLLAR - 127mm

During the tiling process in the bathroom, the collar is sometimes offset instead of being exactly in the center (this happens with 20% of top access floor traps)

Result - Bells, inserts, containers in the trap cannot be removed to maintain the trap. The large opening in the Chezy Collar allows easy access, with even 15mm misalignment of the tiles in any direction, access to all Chezy floor trap parts in the trap can be removed and serviced easily.



HAIR TRAP

One of the main reason for blockages in floor traps is hair. Our floor trap comes with a built-in hair trap. Remove the grating and remove the hair trap. Clean the hair trap and place it back. As simple as that, easy.

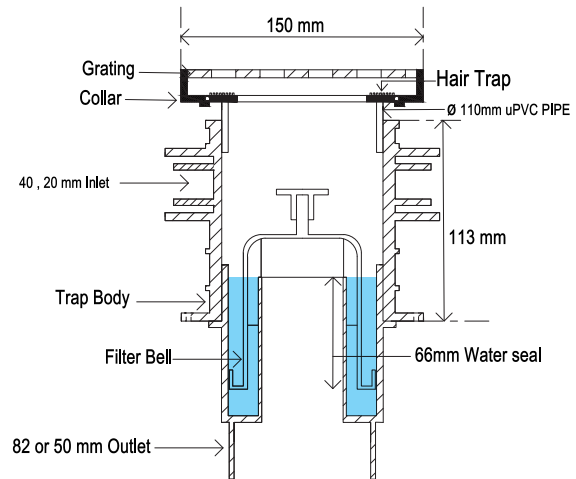


PATENTED ONE PIECE BELL & CONTAINER

This ingenious design has tremendous benefits. It acts as a secondary filter and distributes evenly the flow of water through the floor trap. This system increases the efficiency of the floor trap. The container acts to prevent particles of debris larger than 3.5mm from clogging or blocking the outlet of the floor trap. This enables easy maintenance of the floor trap. You would never need to rod the floor trap or clear the outlet of the trap.

WATER SEAL - 66mm

For Chezy Top Access Floor Trap



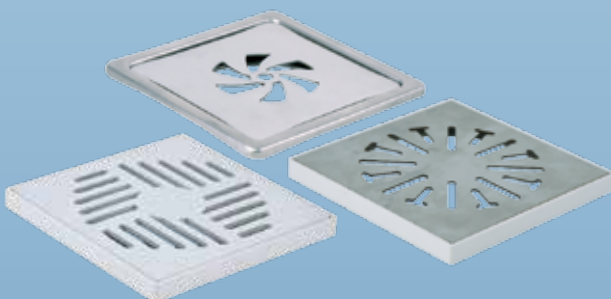
FLOOR TRAP WITH THE DEEPEST WATER SEAL - 66mm

The Chezy Floor Trap has the deepest water seal of all floor traps available in the country. This means that the evaporation of the water seal will last the longest in Malaysia for Top Access Floor Traps as a result of non-usage of the floor trap. Loss of the water seal can result in foul smell and insects entering the bathroom. The water seal in our floor traps will out last any top access systems in the country.



BACK FLOW THROUGH GRATINGS

As a result of high flow through the inlets of the floor trap body (double kitchen sinks, washing machines and etc), there is a high chance of back flow, soap bubbles coming through the grating if the discharge flow stream hits a body (inserts, bell, & etc) in its path in the floor trap. With the Chezy Floor Trap, there is no blockage or barrier to the flow stream letting the discharge flow through easily.



WHY CHEZY TOP ACCESS FLOOR TRAPS?

Apart from the flair, aesthetics and architecturally pleasing gratings of the Chezy Top Access Floor Traps - The developers, architects, consultants and house owners receive the best functional and great additional benefits at no additional costs. All for free!!!

CHEZY SIDE FLOW CONCEALED FLOOR TRAP

WHY CHOOSE CHEZY SIDE FLOW CONCEALED FLOOR TRAP?

This Chezy Side Flow Concealed Floor Trap has flow rates in excess of 60 litres/min and has a 50mm outlet pipe, so that the whole trap, outlets and inlet pipes into the concealed side flow floor trap can be concealed in the floor slab. Maintenance and rodding of the pipe is easy. This can be done either by removing the cap of the trap insert or by totally removing the whole trap insert.

All pipes coming in or outlets are concealed in the slab, allowing for a larger space below the slab or eliminating the use of false ceilings.



ACCESSORIES AVAILABLE



Chezy In-Line Container

Chezy In-Line Container

Chezy Side Flow Concealed Floor Trap

Main Stack

Side Flow Concealed Floor Trap



The ability to remove the trap device, allows for more space for servicing and maintenance purposes. The Chezy In-Line Container with adjustable support allows the flexibility of being joined directly to the floor trap or being joined to each other in series. This allows for draining larger areas like balconies, car parks, commercial toilets and many more.

Side Flow Concealed Floor Trap with In-Line Container



Side Flow Concealed Floor Trap for 150mm Floor Slab



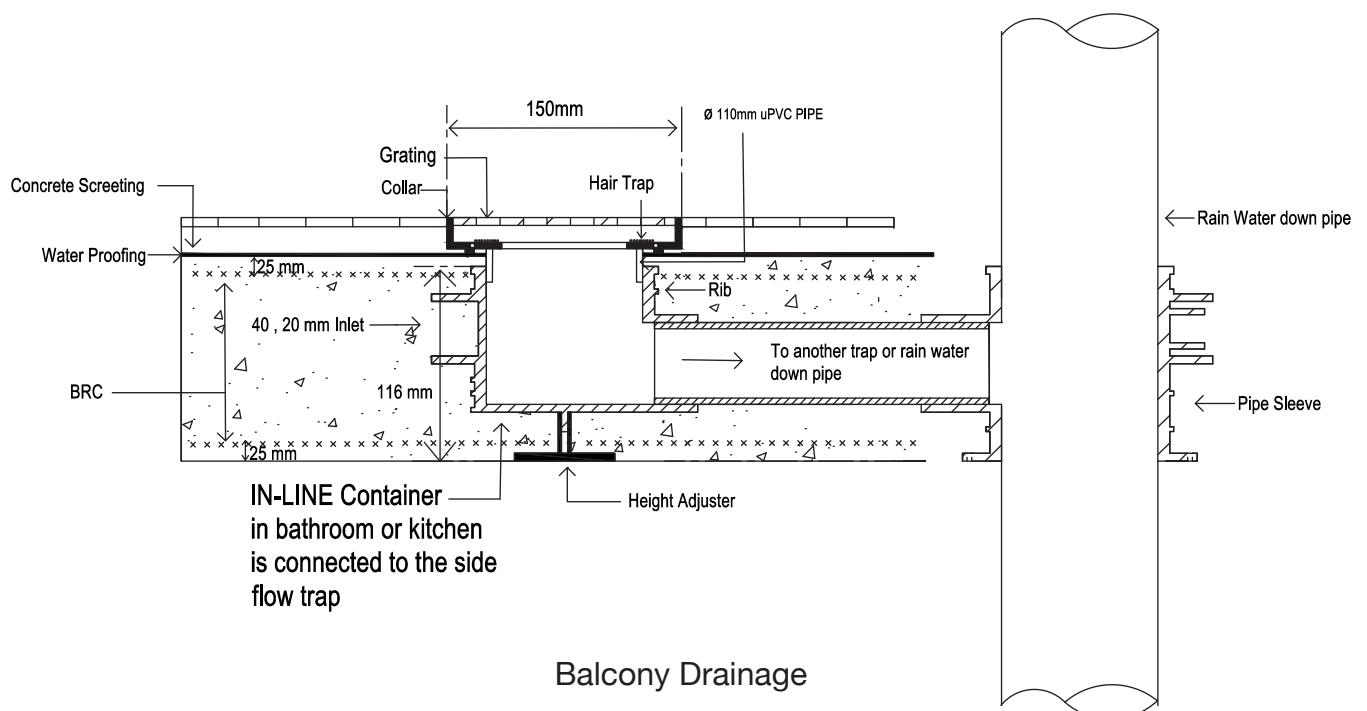


SIDE FLOW CONCEALED FLOOR TRAP USED FOR BALCONY DRAINAGE

The Chezy In-line Container comes in 2 sizes with 50mm (2 inch) outlets. The 110mm (4 inch) container is used with a 150mm (6 inch) grating and the 82mm (3 inch) container accommodates a 100mm (4 inch) grating. The In-line Containers can be used in the dry part of the bathroom or kitchen and connected to the floor trap.

INSTALLATION DRAWING

Side Flow Concealed Floor Trap with In-Line Container for Balcony Drainage



CHEZY CONVENTIONAL FLOOR TRAP

The Chezy conventional floor trap has flow rates in excess of 80 litres/min.

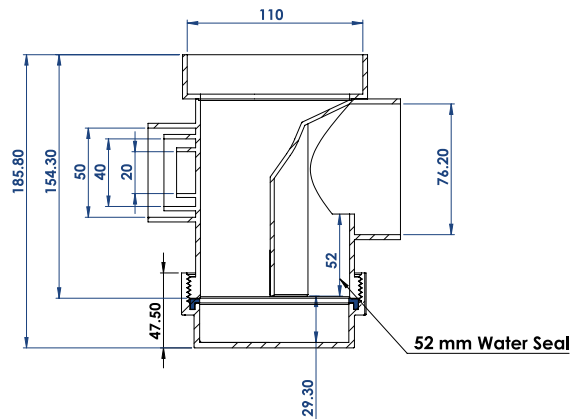
These conventional floor traps are placed below the floor slab and can have 3 connections to allow for basin, kitchen sink, long bath and air-conditioning water discharge pipes.

According to British and European standards, the water seal must be a minimum of 50mm.



DIMENSIONS

Conventional Floor Trap



ADVANTAGES

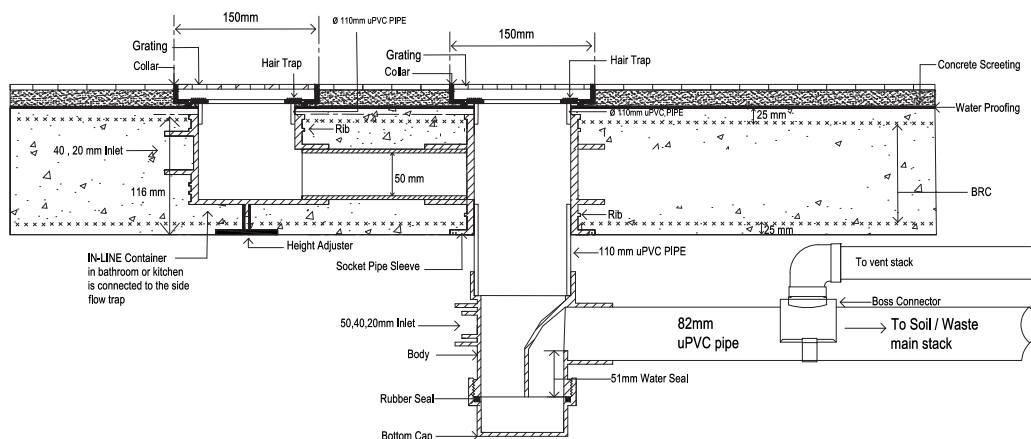
This floor trap design are accessible from the bottom by unscrewing the cap at the bottom for cleaning blockages and for rodding purposes.

DISADVANTAGES

They cannot or are difficult to service from the top. This is especially difficult in high rise buildings as owners in lower floors may not allow access for servicing of the floor trap for the floor above.

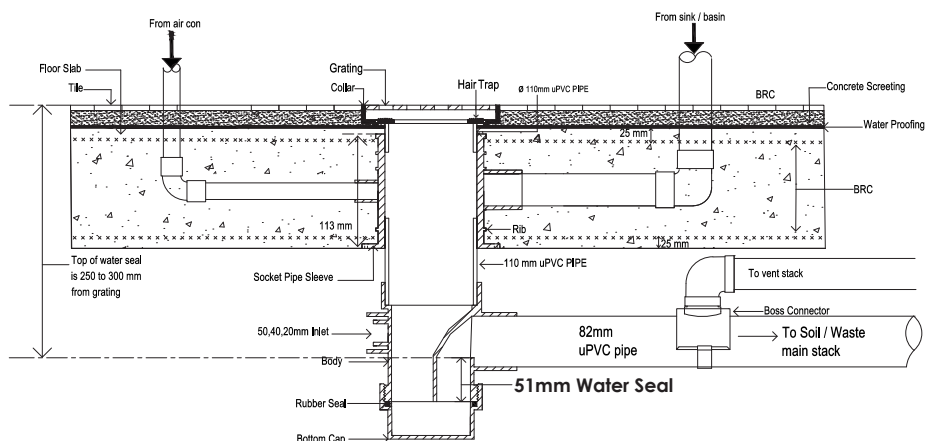
INSTALLATION DRAWING

Conventional Floor Trap with Chezy In-Line Container



INSTALLATION DRAWING

Conventional Floor Trap for 150mm Floor Slab



CHEZY BOTTLE FLOOR TRAP



The Chezy Bottle design floor trap can be used with 150mm (6-inch) collar and gratings and 100mm (4-inch) collar and grating designs.

For the 150mm gratings a 100mm (4-inch) trap body is used. For the 100mm (4-inch) gratings, a 82mm (3-inch) body is used for the bottle trap.

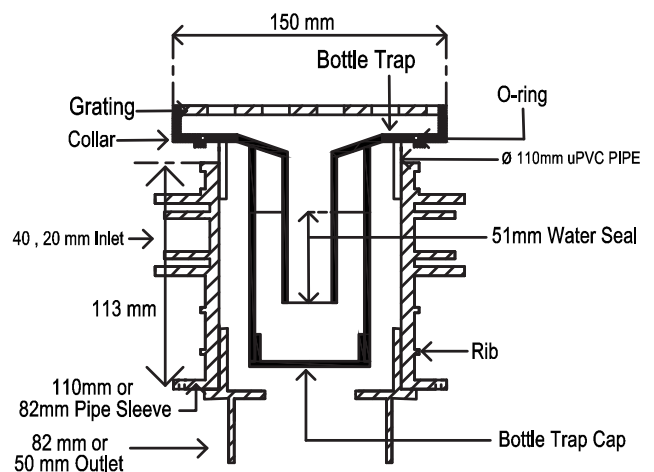
This economical floor trap can be used as a side flow floor trap, when the outlet is 50mm (2-inch) and the outlet pipe is embedded in the floor slab. If it is used as a bottom outlet, it allows you to use a 82mm (3-inch) or 50mm (2-inch) outlet at the bottom.

The flow rate for this bottle floor trap design is in excess of 52 litres/min, which is more than sufficient for your use.

Disadvantage for this bottle floor trap design is that sanitary ware that is connected to this bottle floor trap design **must have their own traps**, that is kitchen sink, basin, etc must have their own traps. The traps of these outlets can be connected to the body.

BOTTLE FLOOR TRAP

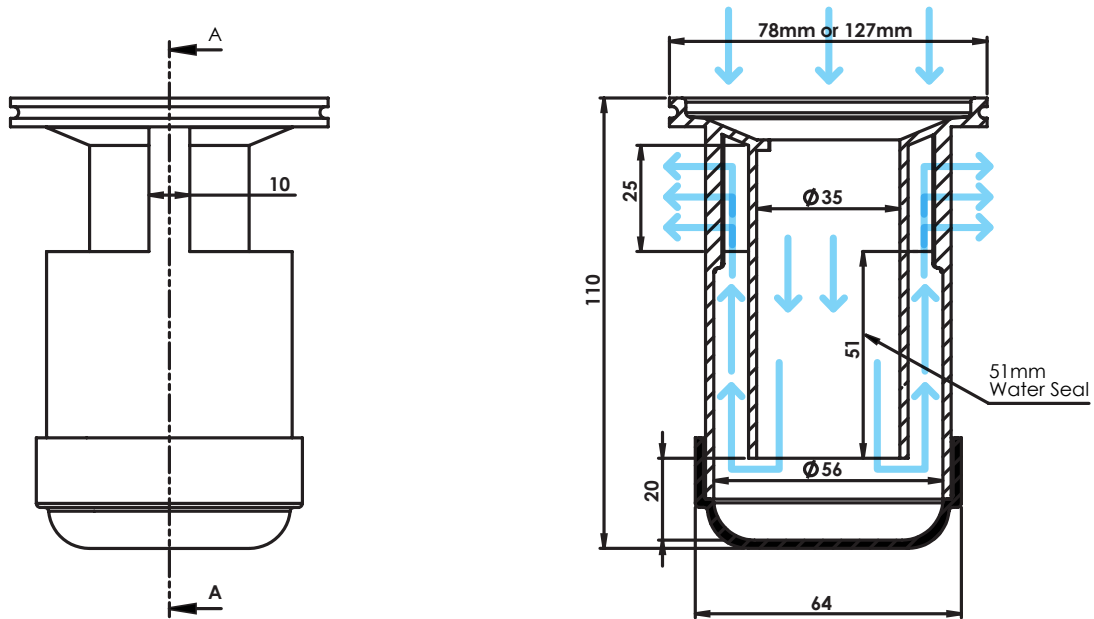
For 150mm Floor Slab



Bottle Floor Trap for 150mm floor slab

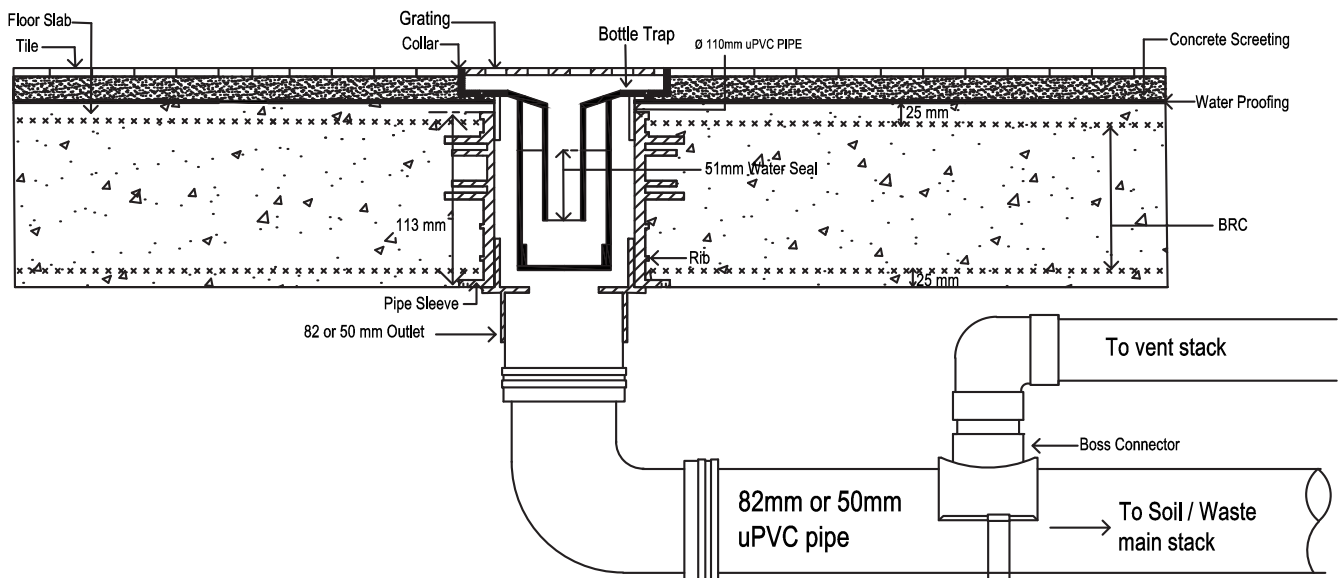
DIMENSIONS

4" Bottle Floor Trap



INSTALLATION DRAWING

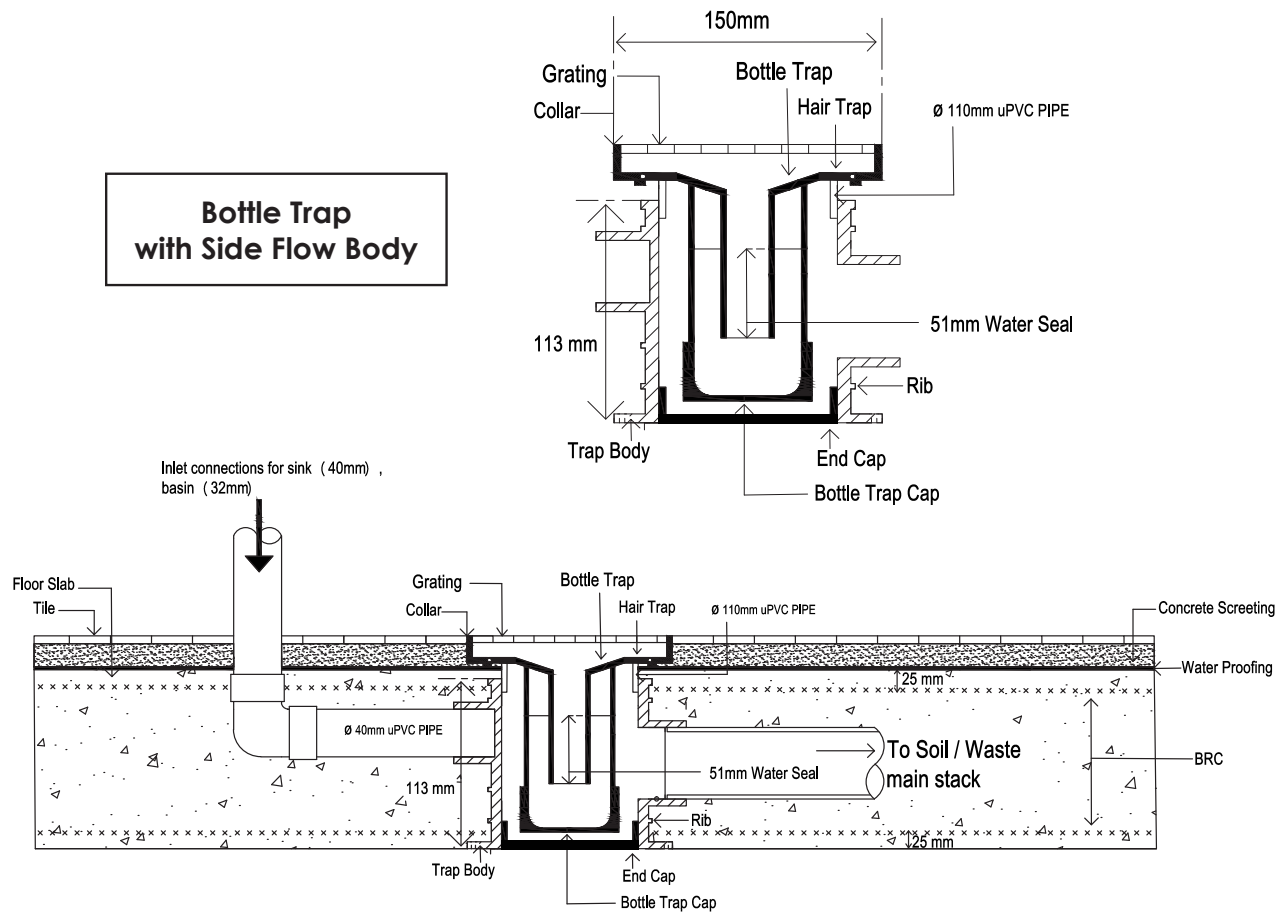
Bottle Floor Trap for 150mm Floor Slab



NOTE : THIS DESIGN CANNOT BE USED WITH AIR-CONDITIONING PIPES.

INSTALLATION DRAWING

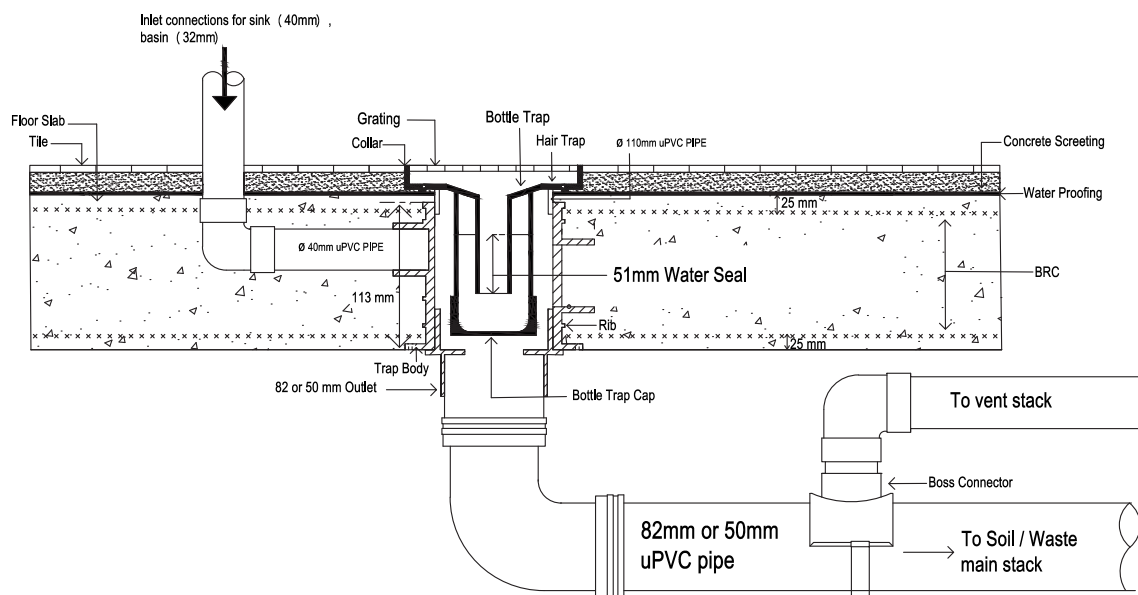
Bottle Floor Trap with Side Flow Body Connection



Bottle Floor Trap with Side Flow Body Connection with Outlet Pipe in Slab

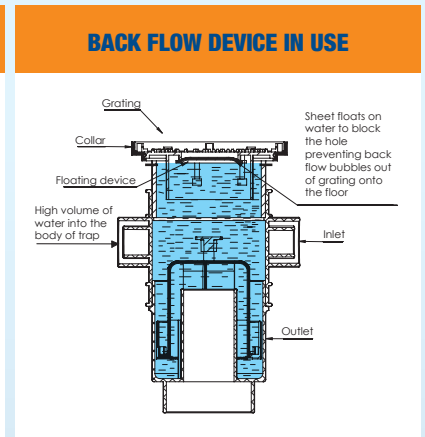
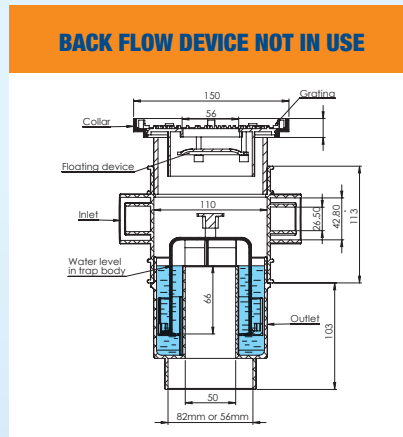
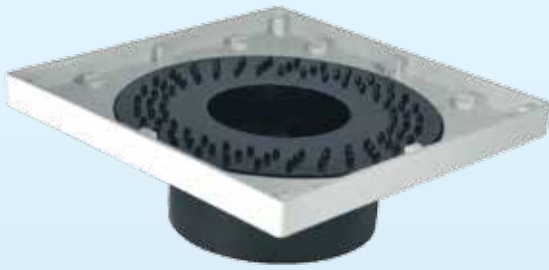
INSTALLATION DRAWING

Bottle Floor Trap



Bottle Floor Trap with Bottom Outlet Connection

CHEZY FLOOR TRAP ACCESSORIES



BACK FLOW DEVICE FOR TOP ACCESS FLOOR TRAP

We now have an additional feature (this patented new feature) which not only traps hair and other debris, it prevents any backflow of water, soap bubbles out of the floor trap through the grating onto the floor.

Presently, all available top access floor trap brands in the market have the problem of soap bubbles coming out of the grating. This happens if the washing machine discharge hose is put into the grating or if a twin bowl kitchen sink is discharged simultaneously from both bowls into the trap.

The high volume of water discharged will result in water or soap bubbles coming out of the grating and onto the floor.

Our Chezy Backflow Device helps eliminate this problem with **No Bubbles & No Backflow of Water!**



SOCKET PIPE SLEEVE FOR CHEZY FLOOR TRAPS

Our full and half body socket pipe sleeves are used in the floor slab. These are used for uPVC pipes that are placed in the slab. Maximum pipe size that can be used in the slabs are up to 50mm.



IN-LINE CONTAINER FOR CHEZY FLOOR TRAPS

The Chezy In-line Container comes in 2 sizes with 50mm (2 inch) outlets. The 110mm (4 inch) container is used with a 150mm (6 inch) grating and the 82mm (3 inch) container accommodates a 100mm (4 inch) grating. The In-line Containers can be used in the dry part of the bathroom or kitchen and connected to the floor trap.

COMPREHENSIVE LABORATORY FOR QUALITY CONTROL



PROVIDING CUSTOMERS HIGH QUALITY AND TRUSTED CHEZY PRODUCTS

For more information, please contact our trained professionals and engineers.



CHEZY INDUSTRIES SDN BHD

No. 22, Jalan Uranus AK U5/AK, Taman Subang Impian, Seksyen U5, 40150 Shah Alam, Selangor Darul Ehsan
Tel : 03 - 7859 9499 Fax : 03 - 7832 1655 Email : enquiry@chezy.com.my Website : www.chezy.com.my

All brand and/or product names are trademarks of their respective owners. Specifications and external appearance are subject to change without notice. The actual product may vary from images shown in the brochure. The images in this brochure are not real photographs and may have slight differences in detail might appear. Copyright © 2019 Chezy Industries Sdn Bhd. All rights reserved. This brochure, its contents and/or layout may not be modified and/or adapted, copied in part or in whole and/or incorporated into other works without the prior written permission of Chezy Industries Sdn Bhd.