

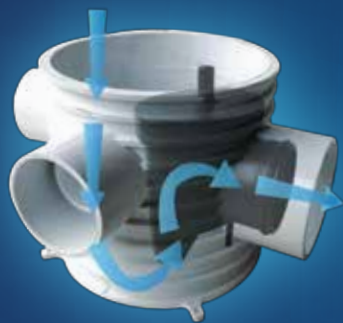


CHEZY SUPERIOR FLOOR TRAP SYSTEM BS EN 1253 : 2015

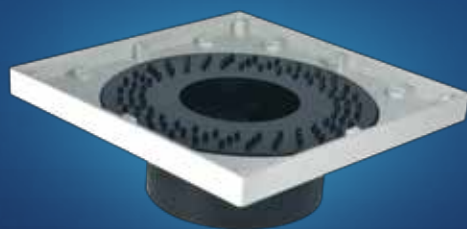
**THE BEST FOR
EVERY HOME**



**TOP ACCESS
FLOOR TRAP**



**SIDE FLOW
CONCEALED FLOOR TRAP**



BACK FLOW DEVICE



**ALL ACCESS
FLOOR TRAP**



CHEZY PRODUCTS



**PP INSPECTION CHAMBER
(BS EN 13598)**



**RAINWATER SUMP
(BS EN 13598)**



**FLOOR TRAP SYSTEM
(BS EN 1253)**



**FLOOR TRAP
ACCESSORIES**



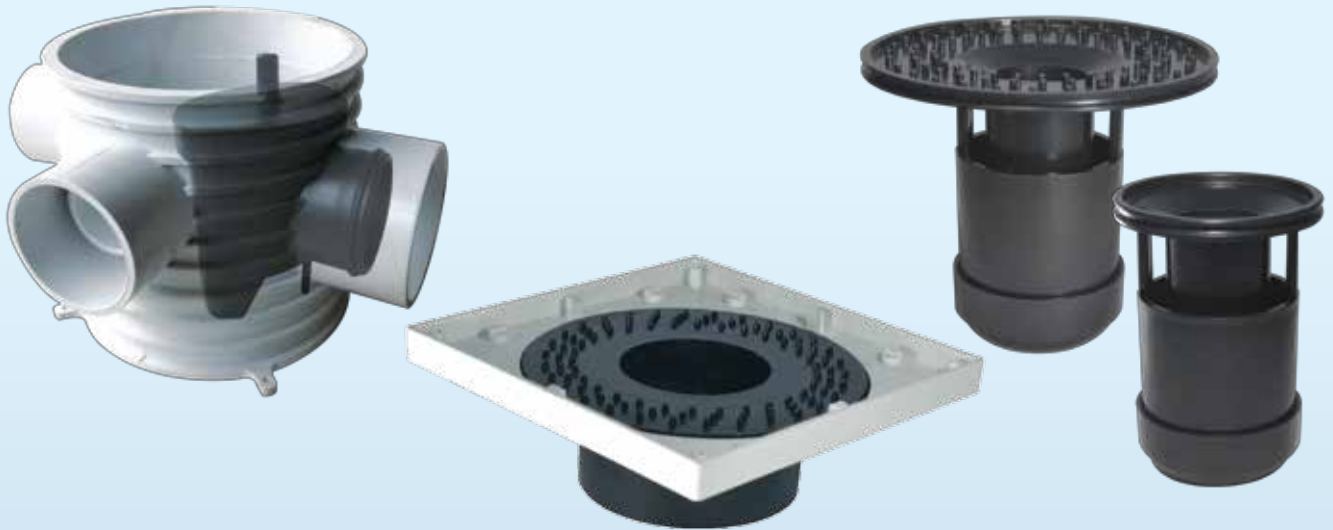
**STOP VALVES
(SIRIM 9)**



**SOCKET FUSION STOP VALVES
(SIRIM 9)**



**MECHANICAL COMPRESSION
FITTINGS FOR HDPE PIPES
(SIRIM II)**



CHEZY FLOOR TRAPS

The Number 1 Floor Trap System. There is no problem too big for CHEZY Floor Traps - we have models for all problems that includes no water seal - smell, over flow at your grating, soap bubbles, hair trap, ease of servicing and etc. **That is why we have the best floor traps in the country** - all solutions for all problems.

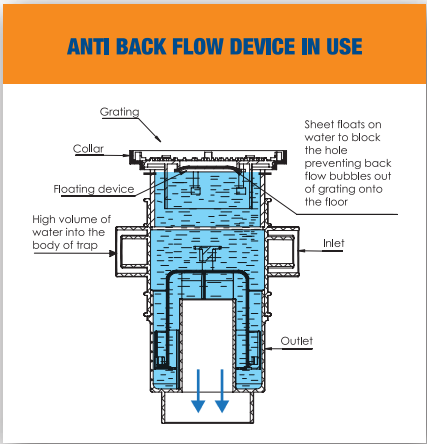
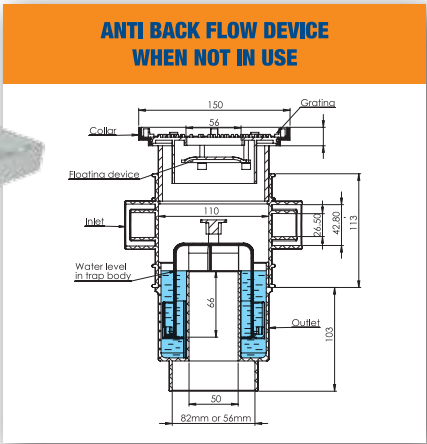


PROBLEMS THAT CHEZY FLOOR TRAPS SOLVE

ANTI BACK FLOW DEVICE



Prevention of
Back Flow of water
through grating



COLLAR



Large opening in collar allows
for misalignment to center of the
floor trap for access to internal
parts of the trap

HAIR TRAP



Hair Trap below grating
to trap hair

ANTI SOAP BUBBLE DEVICE



Soap bubble prevention
from grating for washing machine
or kitchen sink

INFORMATION ON FLOOR TRAPS TO BS EN 1253-1

This write up has the intention of updating and informing you on the requirements of BS EN 1253-1 (Gullies for buildings, Part 1: Trapped floor gullies with a depth water seal of at least 50mm), where there are side connections on the body of the trap for basin, kitchen sinks, washing machines and etc.

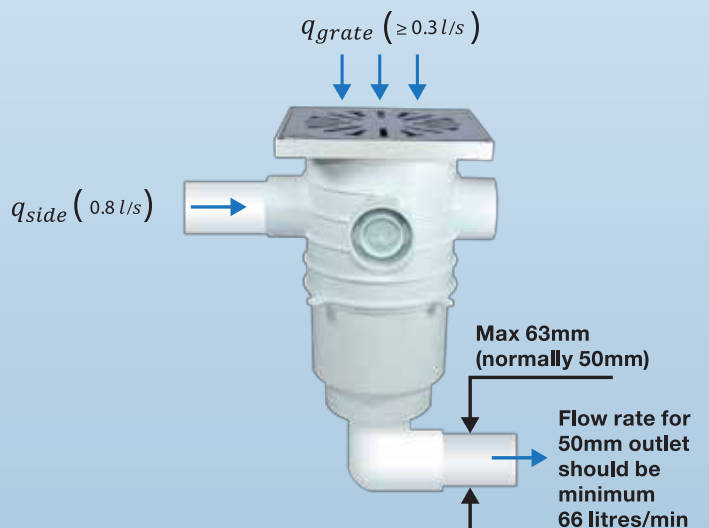
Extracted from BS EN 1253-1:2015:

Water through the grating and side inlets. When tested in accordance with 5.9.2, floor gullies shall be capable of discharging at flow rates 'q' given below.

Floor gullies up to DN 63 with one or more side inlets:

$$q_{side} = 0.8 \text{ l/s and } q_{grate} \geq 0.3 \text{ l/s}$$

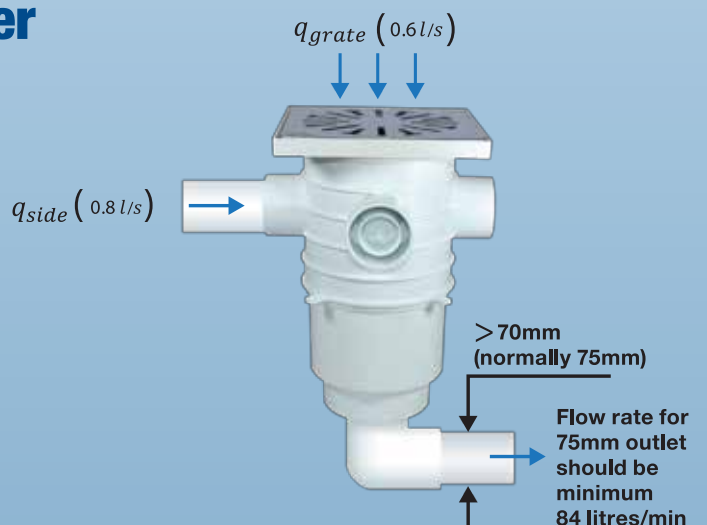
**MINIMUM FLOW RATE REQUIRED FOR 50mm
OUTLET AS PER BS EN 1253-1 : 66 LITRES/MIN**



Floor gullies equal to or greater than DN 70 with one or more side inlets:

$$q_{side} \text{ and } q_{grate} = 0.8 \text{ l/s} + 0.6 \text{ l/s}$$

**MINIMUM FLOW RATE REQUIRED FOR 75mm
OUTLET AS PER BS EN 1253-1 : 84 LITRES/MIN**



CONTENTS

Chezy Floor Trap Gratings	07
---------------------------	----

Chezy 1 Top Access Floor Trap	11
-------------------------------	----

Chezy 2 All Access Floor Trap	18
-------------------------------	----

Chezy 3 Side Flow Concealed Floor Trap	23
--	----

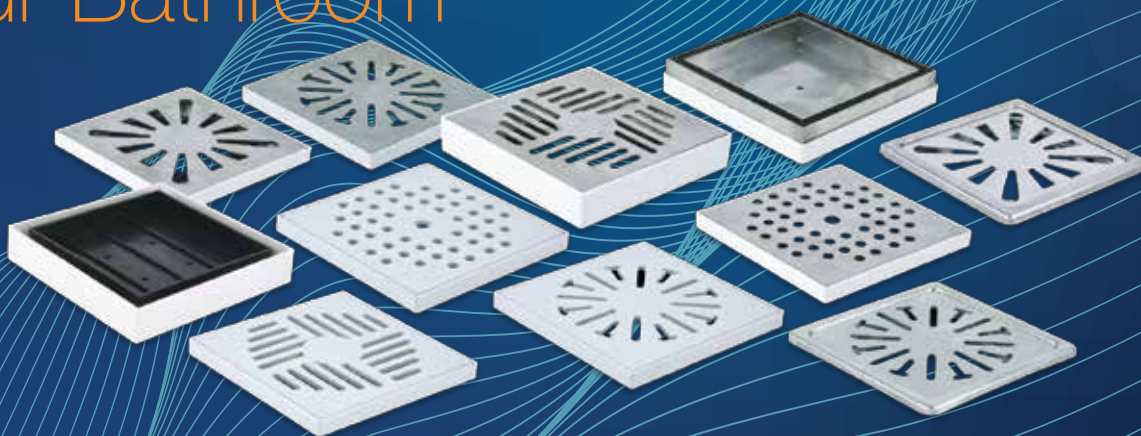
Chezy 4 Bottle Floor Trap	27
---------------------------	----

Chezy 5 Conventional Floor Trap	33
---------------------------------	----

Chezy Floor Trap Accessories	36
------------------------------	----

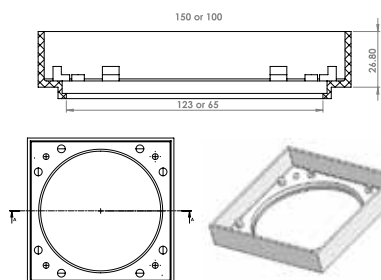
CHEZY FLOOR TRAP GRATINGS

Add Flair To Your Bathroom

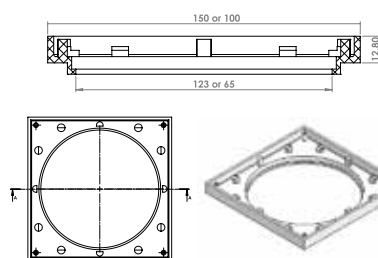
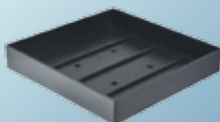


TILE TRAY & COLLAR SPECIFICATIONS

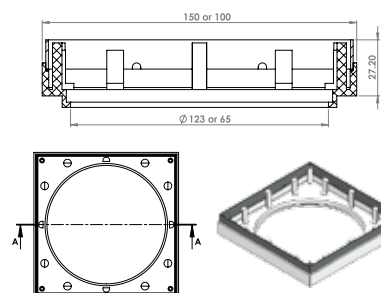
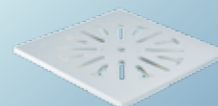
BY USING CHEZY COLLARS, IT ALLOWS YOU TO USE OUR ACCESSORIES LIKE ANTI BACKFLOW DEVICES, ANTI SOAP BUBBLE DEVICES, BOTTLE TRAP AND ETC. NO HOUSEHOLD COMPLAINTS. NO HEADACHES - WE HAVE ALL THE SOLUTIONS.



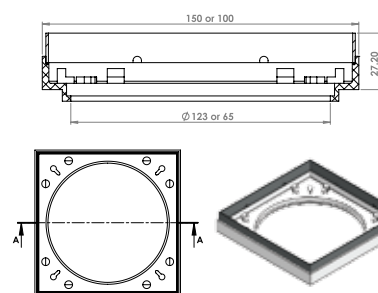
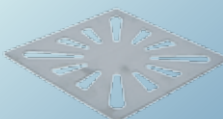
PLASTIC TILE
TRAY COLLAR
WITH TILE TRAY



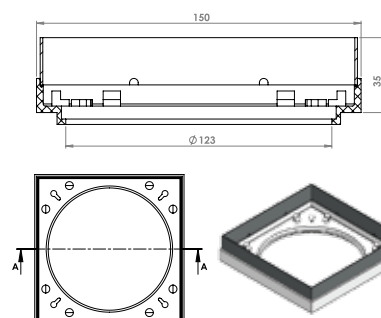
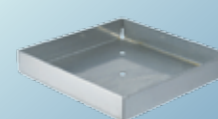
STANDARD
PLASTIC
COLLAR FOR
ALL GRATINGS



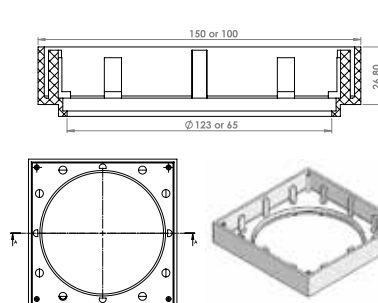
COLLAR WITH
METAL LINING
AND METAL
GRATING



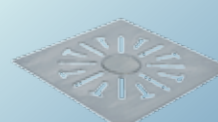
PLASTIC
COLLAR WITH
METAL LINING
FOR METAL TRAY



PLASTIC
COLLAR WITH
METAL LINING
FOR MARBLE
TRAY



DEEP PLASTIC
COLLAR



HIGH QUALITY 6" STAINLESS STEEL FLOOR TRAP GRATINGS

BY USING CHEZY COLLARS, IT ALLOWS YOU TO USE OUR ACCESSORIES LIKE ANTI BACKFLOW DEVICES, ANTI SOAP BUBBLE DEVICES, BOTTLE TRAP AND ETC. NO HOUSEHOLD COMPLAINTS. NO HEADACHES - WE HAVE ALL THE SOLUTIONS.



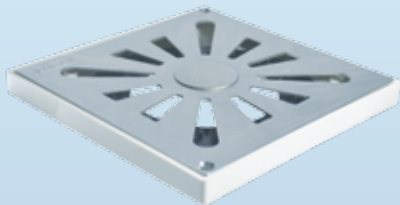
Product code: SG4-PC

Exceptional quality stainless steel and polished finish grating with plastic collar.
Color: Silver
Size: 6" x 6" (150mm x 150mm)
Load: 300 KG



Product code: SG1-PCD

High quality stainless steel and aesthetically pleasing grating with plastic collar.
Color: Silver
Size: 6" x 6" (150mm x 150mm)
Load: 300 KG



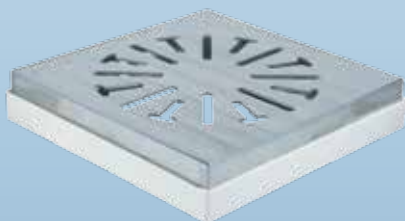
Product code: SGW4-PC

Exceptional quality stainless steel and polished finish grating with plastic collar and washing machine plug.
Color: Silver
Size: 6" x 6" (150mm x 150mm)
Load: 300 KG



Product code: SGW1-PCD

High quality stainless steel and aesthetically pleasing grating with plastic collar and washing machine plug.
Color: Silver
Size: 6" x 6" (150mm x 150mm)
Load: 300 KG



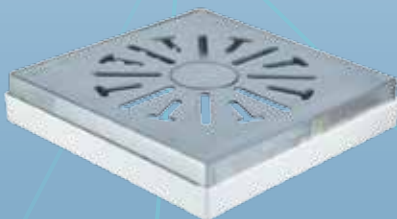
Product code: SG2-(L)-PC

High quality stainless steel and well-designed grating and lining with plastic collar.
Color: Silver
Size: 6" x 6" (150mm x 150mm)
Load: 300 KG



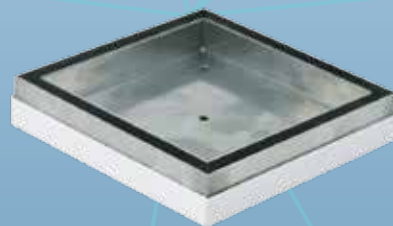
Product code: ST-PCT

Sleek looking high quality stainless steel tile tray with plastic collar.
Color: Silver
Size: 6" x 6" (150mm x 150mm)
Load: 300 KG



Product code: SGW2-(L)-PC

High quality stainless steel and well-designed grating with plastic collar and washing machine plug.
Color: Silver
Size: 6" x 6" (150mm x 150mm)
Load: 300 KG

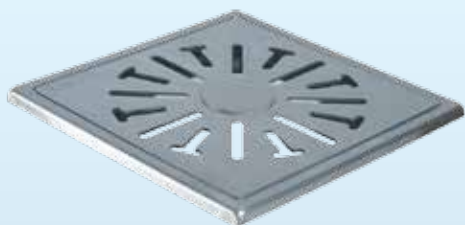


Product code: ST-(L)-PCT

Sleek looking high quality stainless steel lining and tile tray with plastic collar.
Color: Silver
Size: 6" x 6" (150mm x 150mm)
Load: 300 KG

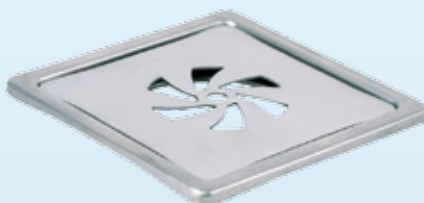
HIGH QUALITY 6" STAINLESS STEEL FLOOR TRAP GRATINGS

BY USING CHEZY COLLARS, IT ALLOWS YOU TO USE OUR ACCESSORIES LIKE ANTI BACKFLOW DEVICES, ANTI SOAP BUBBLE DEVICES, BOTTLE TRAP AND ETC. NO HOUSEHOLD COMPLAINTS. NO HEADACHES - WE HAVE ALL THE SOLUTIONS.



Product code: SGW2-SC

Elegant design stainless steel grating and collar with washing machine plug.
Color: Silver
Size: 6" x 6" (150mm x 150mm)
Load: 300 KG



Product code: SG5-SC

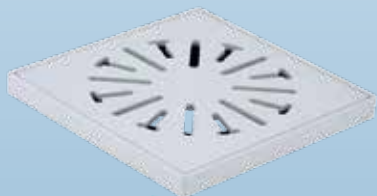
Elegant design stainless steel grating and collar.
Color: Silver
Size: 6" x 6" (150mm x 150mm)
Load: 300 KG



Product code: (ML)-PCT

High quality stainless steel lining and marble tile tray with plastic collar.
Color: Silver
Size: 6" x 6" (150mm x 150mm)
Load: 300 KG

HIGH QUALITY 6" ABS PLASTIC FLOOR TRAP GRATINGS



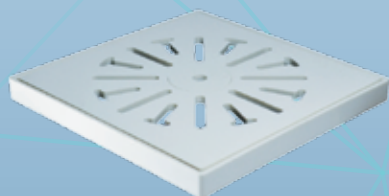
Product code: PG2-PC

Modern design ABS grating and plastic collar.
Color: White
Size: 6" x 6" (150mm x 150mm)
Load: 300 KG



Product code: PG1-PCD

High quality ABS plastic superior finish grating with plastic collar.
Color: Black
Size: 6" x 6" (150mm x 150mm)
Load: 300 KG



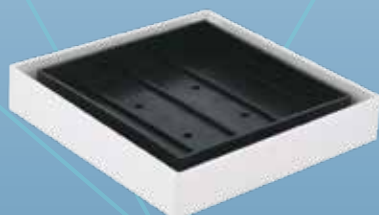
Product code: PGW2-PC

Modern design ABS grating and plastic collar and washing machine plug.
Color: White
Size: 6" x 6" (150mm x 150mm)
Load: 300 KG



Product code: PGW1-PCD

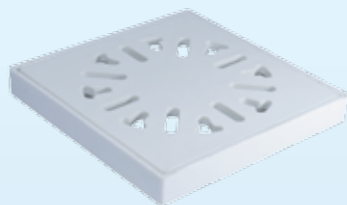
High quality ABS plastic superior finish grating with plastic collar and washing machine plug.
Color: Black
Size: 6" x 6" (150mm x 150mm)
Load: 300 KG



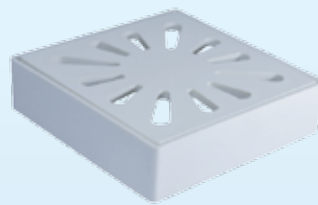
Product code: PT-PCT

Modern design plastic tile tray with plastic collar.
Color: Black
Size: 6" x 6" (150mm x 150mm)
Load: 300 KG

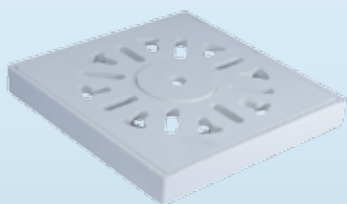
HIGH QUALITY 4" FLOOR TRAP GRATINGS



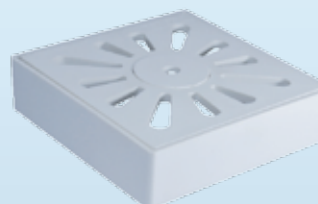
Product code: 4"PG2-4"PC
High quality ABS plastic grating and plastic collar.
Color: White
Size: 4" x 4" (100mm x 100mm)
Load: 300 KG



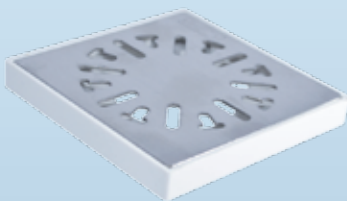
Product code: 4"PG4-4"PCD
High quality ABS plastic grating with plastic collar.
Color: White
Size: 4" x 4" (100mm x 100mm)
Load: 300 KG



Product code: 4"PGW2-4"PC
High quality ABS plastic grating and plastic collar and washing machine plug.
Color: White
Size: 4" x 4" (100mm x 100mm)
Load: 300 KG



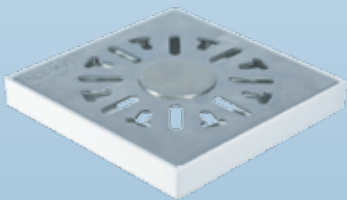
Product code: 4"PGW4-4"PCD
High quality ABS plastic grating with plastic collar and washing machine plug.
Color: White
Size: 4" x 4" (100mm x 100mm)
Load: 300 KG



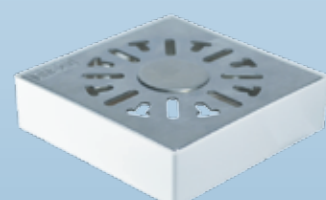
Product code: 4"SG2-4"PC
High quality stainless steel grating with plastic collar.
Color: Silver
Size: 4" x 4" (100mm x 100mm)
Load: 300 KG



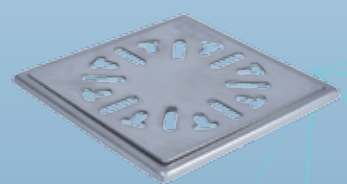
Product code: 4"SG2-4"PCD
High quality stainless steel grating with plastic collar.
Color: Silver
Size: 4" x 4" (100mm x 100mm)
Load: 300 KG



Product code: 4"SGW2-4"PC
High quality stainless steel grating with plastic collar and washing machine plug.
Color: Silver
Size: 4" x 4" (100mm x 100mm)
Load: 300 KG



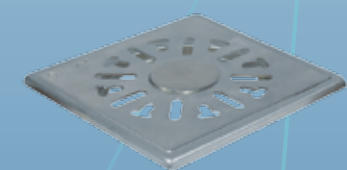
Product code: 4"SGW2-4"PCD
High quality stainless steel grating with plastic collar and washing machine plug.
Color: Silver
Size: 4" x 4" (100mm x 100mm)
Load: 300 KG



Product code: 4"SG2-4"SC
Elegant design with high quality stainless steel grating and collar.
Color: Silver
Size: 4" x 4" (100mm x 100mm)
Load: 300 KG



Product code: 4"ST-4"(L)PCT
Sleek looking high quality stainless steel tile tray and lining.
Color: Silver
Size: 4" x 4" (100mm x 100mm)
Load: 300 KG



Product code: 4"SGW2-4"SC
Elegant design with high quality stainless steel grating and collar with washing machine plug.
Color: Silver
Size: 4" x 4" (100mm x 100mm)
Load: 300 KG

CHEZY 1 TOP ACCESS FLOOR TRAP

Deepest Water Seal - 66mm

Highest Flow Rate - 90 litres/min

Best in Malaysia

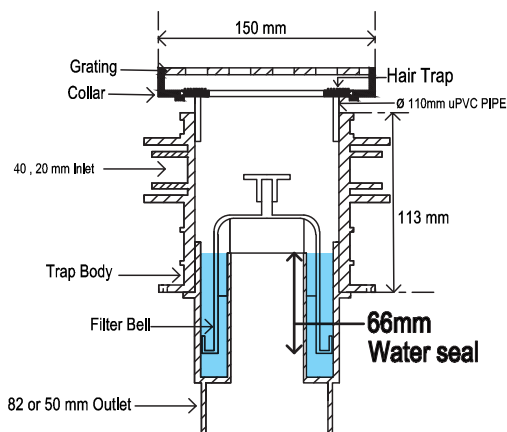


CHEZY 1 TOP ACCESS FLOOR TRAP



TOP ACCESS FLOOR TRAP

For 150mm Floor Slab

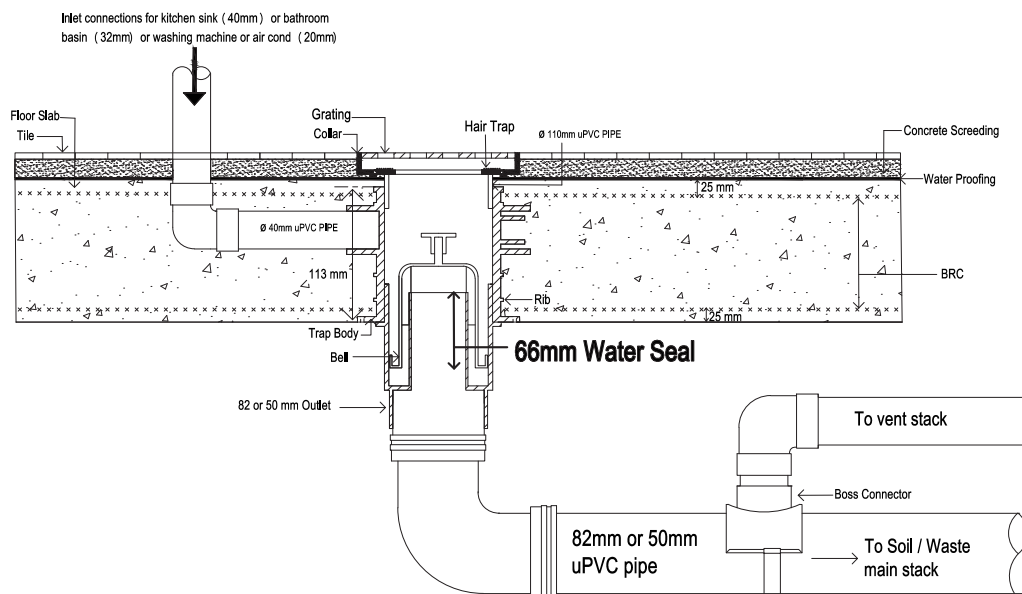


Top Access Floor Trap
for 150mm floor slab

Floor traps are used **and installed in the floor slab** to remove water from the floor in areas like the bathroom, kitchen, yard and etc. Additionally, these traps incorporate a water seal to prevent ingress of foul smell, insects and rodents from the main stack.

All floor traps in Malaysia are manufactured to BS EN 1253, **Trapped floor gullies with a depth water seal of at least 50mm**, which states that floor traps must allow a minimum flow rate of 48 litres/min through the grating and **if side connections are made for basins, kitchen sinks, washing machine and etc; floor traps shall have a flow rate in excess of 80 litres/min. (Please refer to page 5)**

Maintenance is easy and is done from the top. Remove grating and pull Bell out. This will give direct access to the outlet for rodding to clear blockages. **No need to go below the slab.**



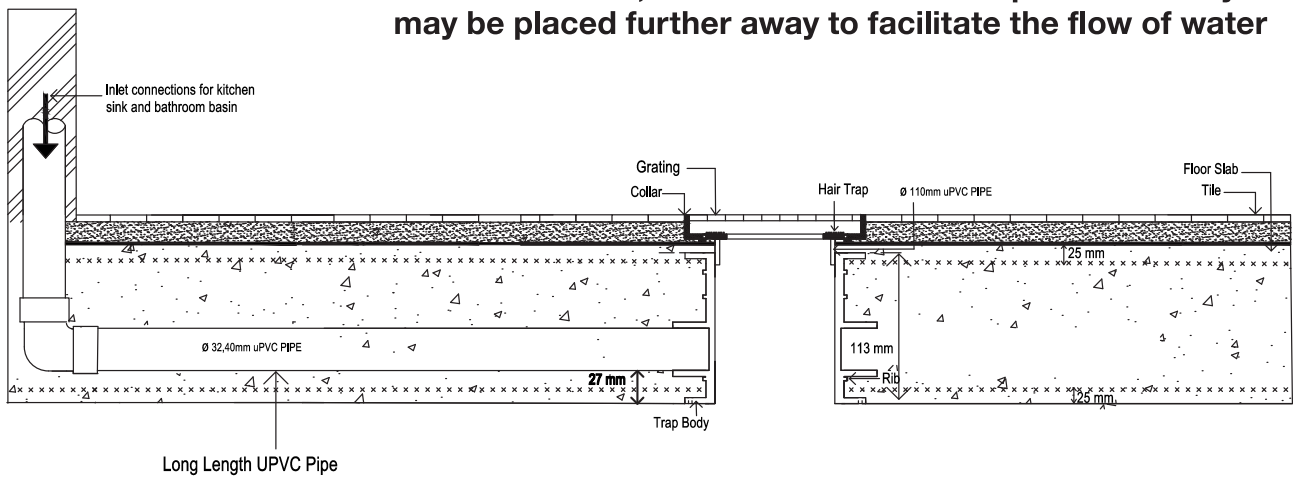
PATENTED FLOOR TRAP BODY

The Chezy Floor Trap Body can be flipped and nailed from either side of the body to the form work. It allows to give different heights to the inlet of the trap body. This facilitates by providing a greater gradient for floor traps that are further away from the wall. This allows a higher flow rate in the coming pipes into the body and provides ease of jointing for pipes to the floor trap body

PATENTED FLOOR TRAP BODY

With Long Length UPVC Pipe

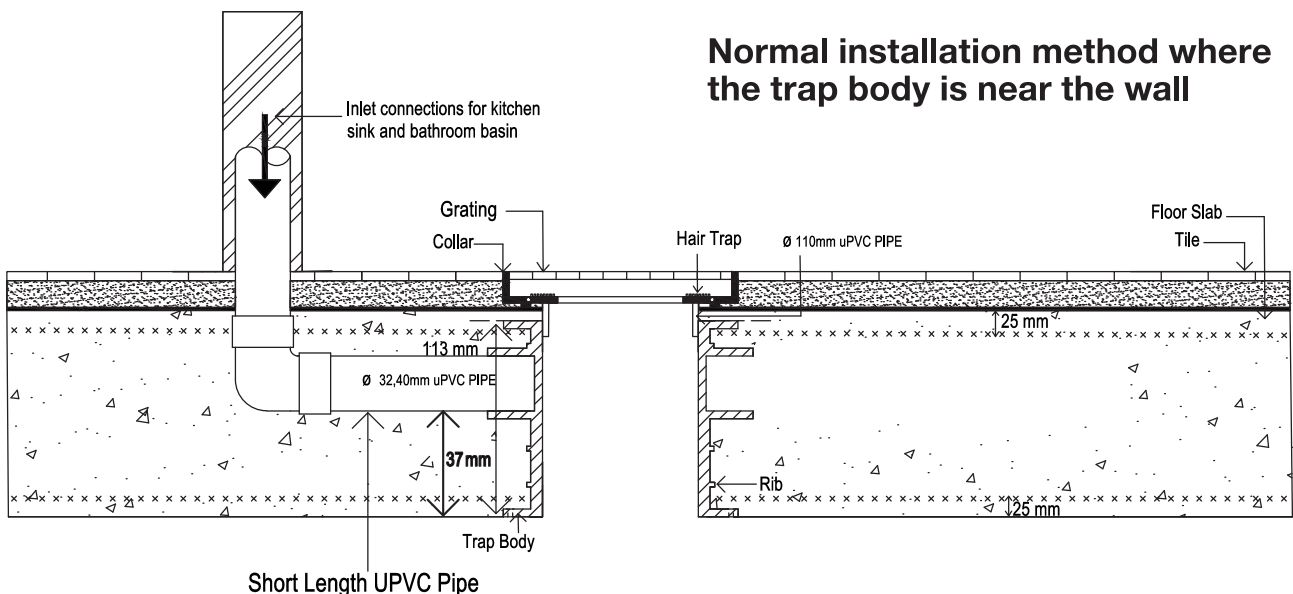
By reversing the trap body, a higher gradient can be obtained in the sink, basin connection to the trap body. This allows sink, basin connection to traps so that they may be placed further away to facilitate the flow of water



PATENTED FLOOR TRAP BODY

With Short Length UPVC Pipe

Normal installation method where the trap body is near the wall

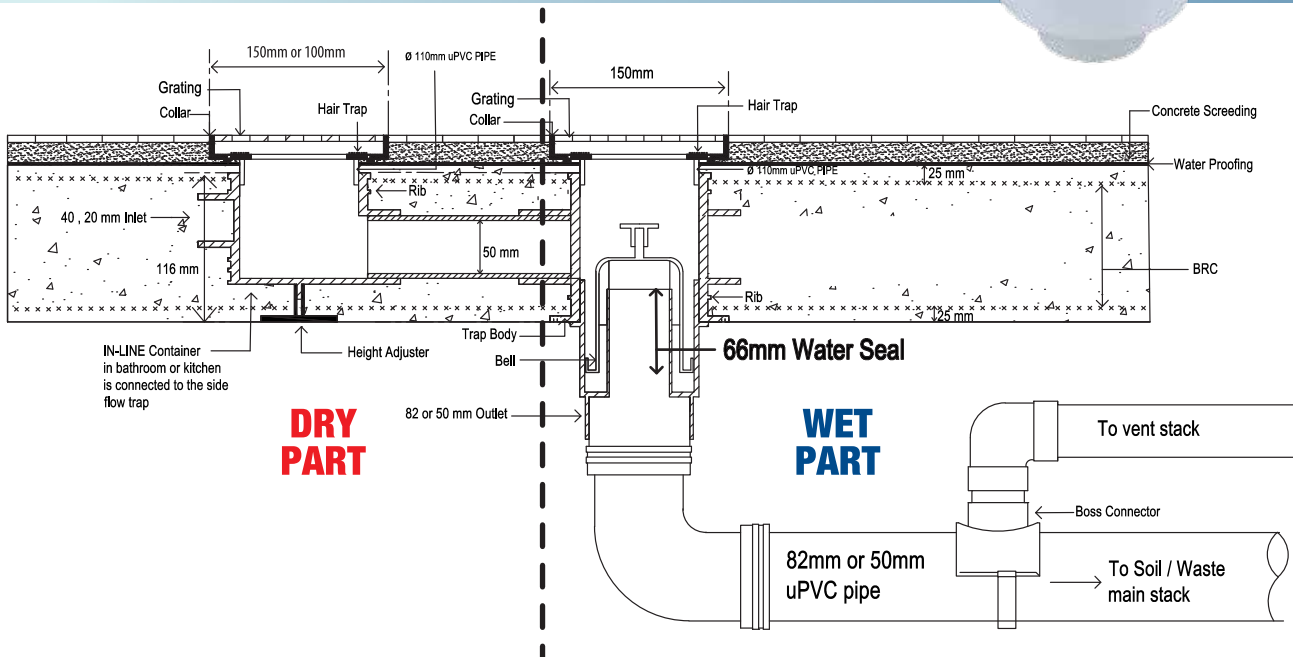


The main reason that top access floor traps are used is that they allow maintenance of the trap from the top. These top access floor traps are placed in the floor slab. The distance of the water seal is close to the grating, hence it is easy to service the floor trap and clear any blockages that may occur in the outlet pipes without going below the floor slab.



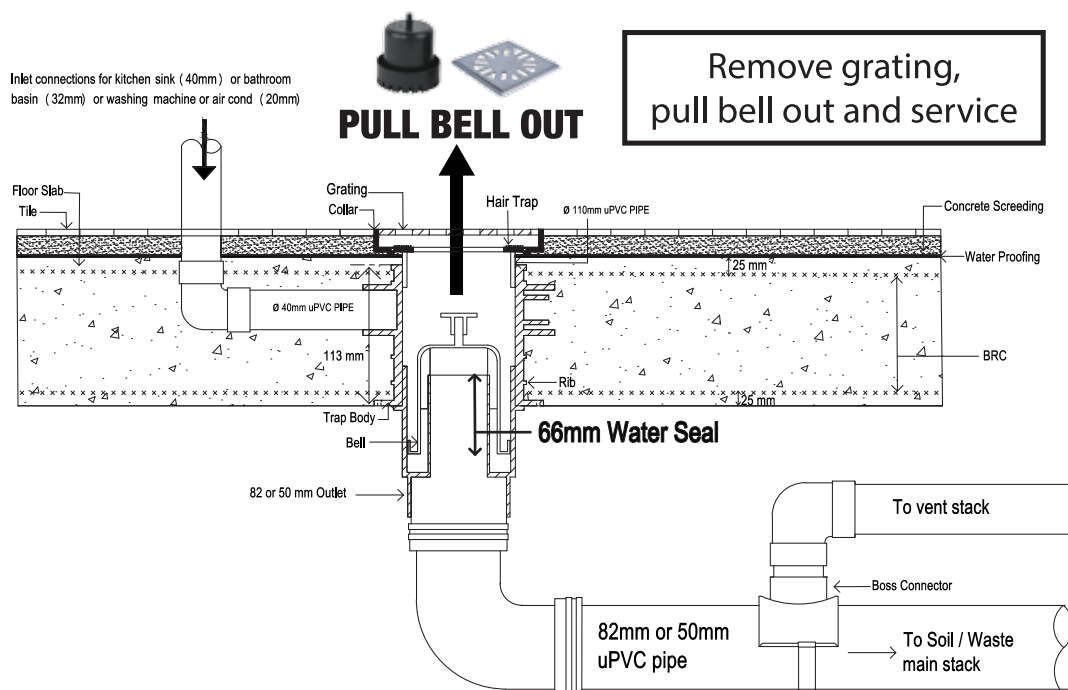
INSTALLATION DRAWING

Top Access Floor Trap with Chezy In-Line Container

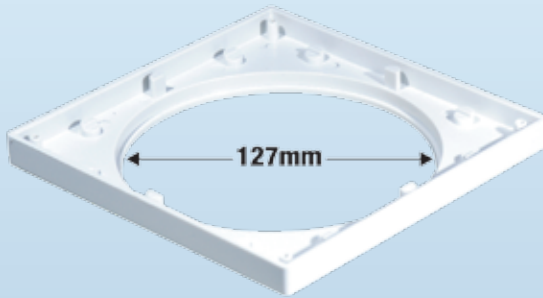


INSTALLATION & MAINTENANCE DRAWING

Top Access Floor Trap for 150mm Floor Slab



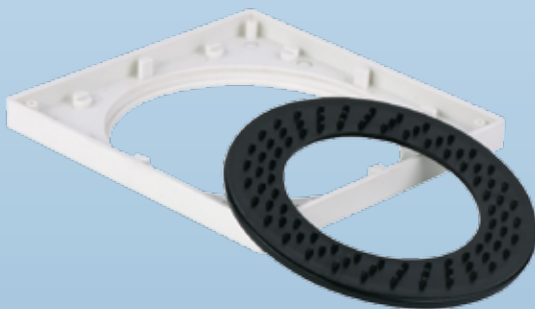
THE REASONS WHY CHEZY 1 TOP ACCESS FLOOR TRAPS BEAT ALL COMPETITORS IN THE MARKET - HANDS DOWN.



LARGE OPENING IN THE COLLAR - 127mm

During the tiling process in the bathroom, the collar is sometimes offset instead of being exactly in the center of the body (this happens with 20% of top access floor traps)

Result - Bells, inserts, containers in the trap cannot be removed to maintain the trap. The large opening in the Chezy Collar allows easy access, with even 15mm misalignment of the tiles in any direction, which allows access to all internal Chezy floor trap parts so that they can be removed and serviced easily.



HAIR TRAP

One of the main reason for blockages in floor traps is hair. Our collar comes with a built-in hair trap.

Remove the grating and remove the hair trap.

Clean the hair trap and place it back. As simple as that, easy. This makes maintenance easy.

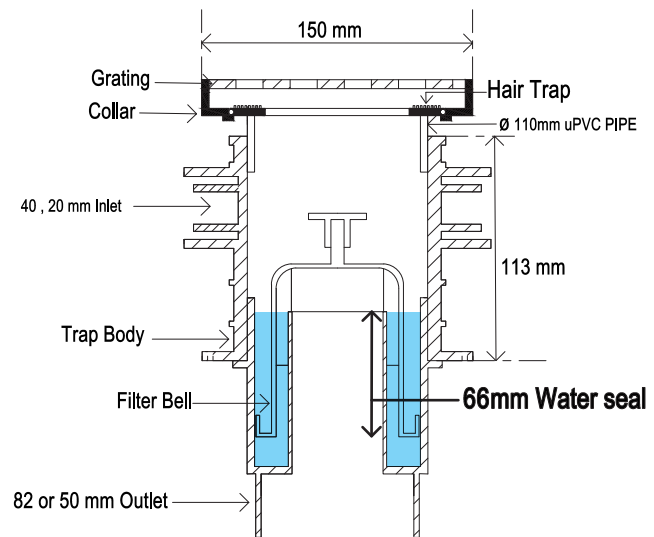


PATENTED ONE PIECE BELL & CONTAINER

This ingenious design has tremendous benefits. It acts as a secondary filter and distributes evenly the flow of water through the floor trap. This system increases the efficiency of the floor trap. The container acts to prevent particles of debris larger than 3.5mm from clogging or blocking the outlet of the floor trap. This enables easy maintenance of the floor trap. You would never need to rod the floor trap or clear the outlet of the trap.

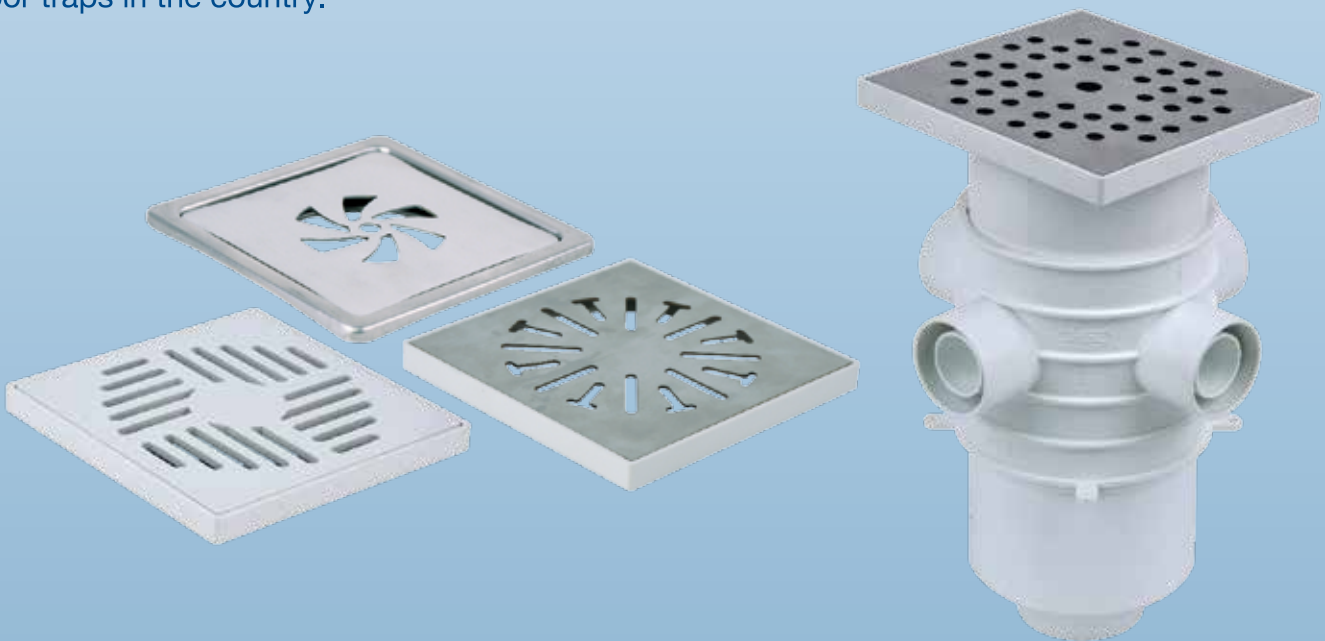
WATER SEAL - 66mm

For Chezy Top Access Floor Trap



CHEZY 1 FLOOR TRAP WITH THE DEEPEST WATER SEAL - 66mm

The Chezy 1 Floor Trap has the deepest water seal of all floor traps available in the country. This means that the evaporation of the water seal will last the longest in Malaysia for Top Access Floor Traps, as a result of non-usage of the floor trap. Loss of the water seal can result in foul smell and insects entering the bathroom. The water seal in our floor traps will out last any top access systems in the country. On top of that, we have the highest flow rates for top access floor traps in the country.



WHY CHEZY TOP ACCESS FLOOR TRAPS?

Apart from the flair, aesthetics and architecturally pleasing gratings of the Chezy Top Access Floor Traps - The developers, architects, consultants and house owners receive the best functional and solutions for any problems that may arise. We have solutions for any problems that may occur.

COMPARISON WITH OTHER TOP ACCESS FLOOR TRAP BRANDS

REQUIREMENTS	CHEZY	BRAND A	BRAND B	BRAND C
Flowrate (BS Requirement is 48 litres/minute for 3" outlet) through the grating	90 l/min	80 l/min	72 l/min	70 l/min
Flowrate (BS Requirement for 3" outlet with side connection to trap is 84 litres/min)	Pass	Not Tested	Not Tested	Not Tested
Depth of Water Seal (SIRIM Requirement; 50 mm)	66 mm	51 mm	Not stated	50 mm
Misalignment of collar/ off-set during tiling	Large opening in collar - 127mm, no purchase required	Purchased item required	Purchased item required	Purchased item required
Design of discharge outlet	Easy to rod	Easy to rod	Easy to rod	Easy to rod
Multiple inlets in pipe sleeve	Yes	Yes	Yes	Yes
Quantity of trap components	1	1	2	2
Built in hair trap for clogage of hair	Yes	None	None	None
Number of filtration(s)	2	None	None	None
Anti-backflow device (Accessory)	Yes	None	None	None
Anti-soap bubble device (Accessory)	Yes	None	None	None

Top Access Floor Trap Technical Comparison

Comparison of Chezy 1 Top Access Floor Trap vs other brands.

Why we are technically superior to all other brands in the market.

**The
Mother of all
Floor Traps**

CHEZY 2 ALL ACCESS FLOOR TRAP

Flow Rate : 80 litres/min

Flow Velocity : 1.3 m/s

**Adjustable Baffle
Container**



CHEZY 2 ALL ACCESS FLOOR TRAP



THE END TO ALL YOUR FLOOR TRAP PROBLEMS

This innovative patented floor trap by Chezy is used below the floor slab to remove water from the floor surface. The body of the floor trap has side connections for the basin, long bath, washing machine, kitchen sink and etc.

This floor trap has a screwed on cap at the bottom of the body which can be unscrewed from below the slab for access to the outgoing pipe for rodding in case of blockages.

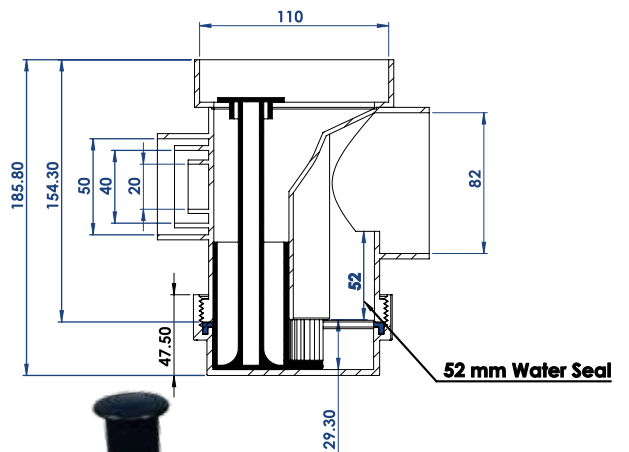
The ingenious **Chezy 2 All Access Floor Trap** is the only floor trap in the market that can be serviced from **both the Top of the bathroom and also Below the slab, that is, you can service either from the top or bottom of the floor trap**. This design eliminates problems during site installation issues like cement dropping into top access floor traps (this is a big issue with installers).

The Chezy 2 All Access Floor Trap becomes a conventional floor trap when the baffled container in the floor trap is not used. Hence, it can be used as a conventional floor trap or as a top access when the baffle container is used.

The 52mm depth of water seal in the floor trap prevents foul smell and rodents entering the bathroom and the high flow rates in excess of 80 litres/min have been certified and tested to BS EN 1253 to show that it passes and complies as a floor trap to be used with side inlets. **A perfect floor trap, addressing all the problems of top access and conventional floor traps.**

DIMENSIONS

All Access Floor Trap



WHY CHEZY 2 ALL ACCESS™ FLOOR TRAP?

There have been numerous complaints from plumbers (installers), developers and house owners with the existing floor traps available in the market. The main issues have been foul smell in the bathroom and maintenance issues during installation and after the house owner moves in. The Chezy All Access™ floor traps eliminates all these problems and gives you peace of mind.

Chezy has developed a new floor trap that can both be serviced from the top (bathroom) or from below (floor slab), hence the name All Access™ (Top & Bottom Access™) Floor Traps.

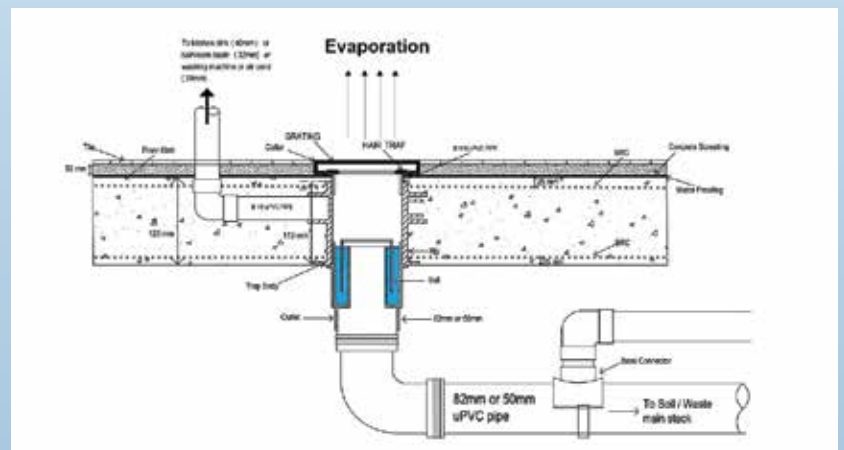
With the ingenious extendable container, this design incorporates a water seal of 52mm and flow rates in excess of 80 litres/min. This new floor trap is third-party certified and exceeds all requirements of BS EN 1253 (gullies for buildings : Trapped floor gullies with a water seal depth of 50mm)



THE PROBLEMS WITH FLOOR TRAPS

FOUL SMELL

This is as a result of the loss of the water seal in the floor trap, either by evaporation of the water in the floor trap or the failure of the rubber ring used to retain the water in the trap.



EVAPORATION

For top access floor traps, the water seal is very close to the heat source (the bathroom may be warm). This facilitates evaporation and is more pronounced if the trap is embedded in the slab, the distance of the top of the water seal is only about 100mm to 120mm from the heat source. In the event that the water in the trap is not topped up by usage, evaporation of the water in the trap will result in the loss of the seal, thus allowing foul smell entering the bathroom.

RUBBER / RUBBER RINGS

It is very important that contact areas that are in touch with the rubber is clean. Dirty surfaces will result in the rubber not having a good sealing effect. This will allow water to escape, thus allowing the loss of water in the water seal and will eventually result in the total loss of the seal and allow foul smell to enter the bathroom. Cement, debris and etc are commonly dropped into the floor trap during construction, this is a common problem causing debris, etc, to prevent a good seal between the rubber and contact surface.

DISADVANTAGES OF TOP ACCESS FLOOR TRAPS

During the construction period (tiling), sometimes concrete is thrown into the trap. This is often difficult for the plumber to clear. Once cleared, the trap usually works well.

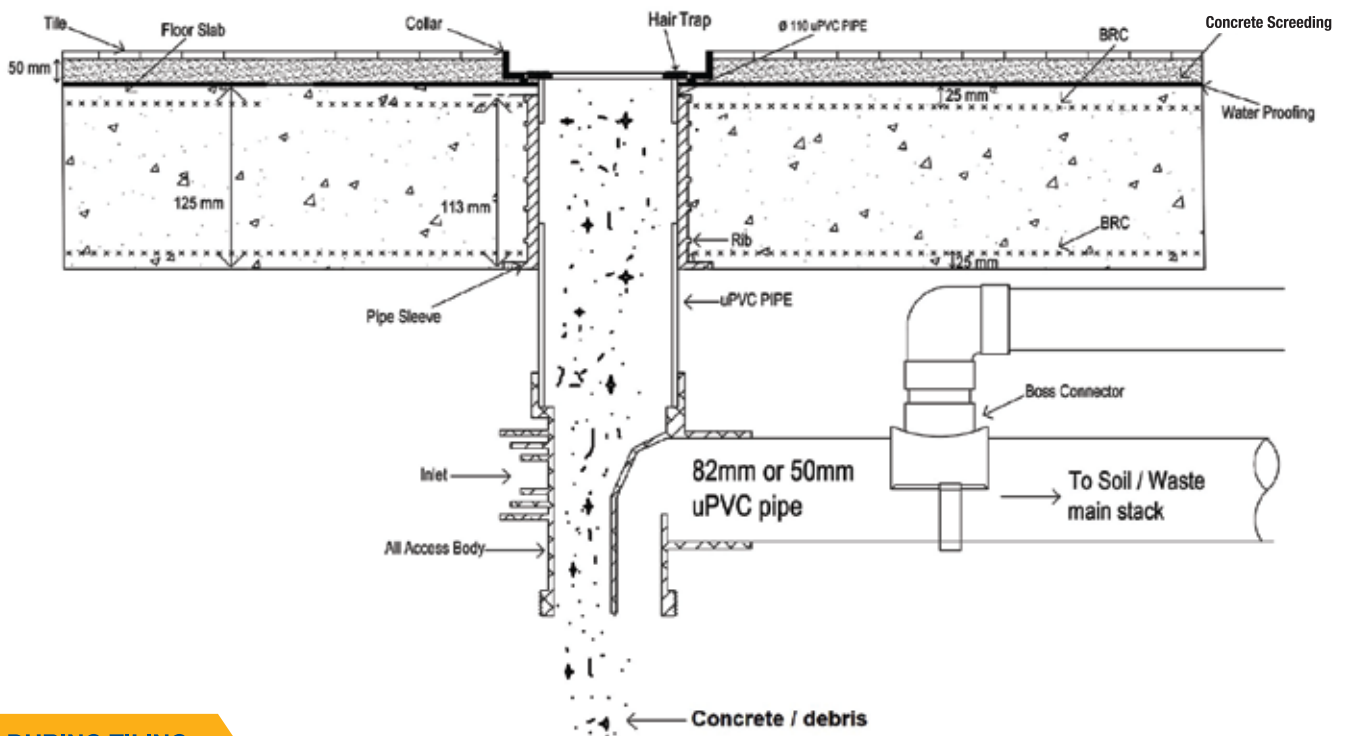
As the water seal for top access floor traps is near the top (grating), the house owner does not have problems servicing and maintaining the floor trap, as he does not need to go below the floor slab to service the floor trap, but during tiling there is always a **misalignment of the collar with the body**. This will result in about 20% of the bell or insert in top access floor traps being difficult to remove during maintenance. Hence, it is important to have an opening of greater than 120mm in the collar to allow for this misalignment of the collar with the body of the trap.

DISADVANTAGES OF CONVENTIONAL FLOOR TRAPS

These conventional floor traps have excess from the bottom only of the trap for maintenance purposes. These floor traps are always placed below the floor slab. Being below the slab, they are further from the heat source. The water in the trap lasts longer in the trap, providing a longer protection against the entrance of foul smell into the bathroom.

Another advantage is that during the construction process the bottom cap is not used, allowing debris and cement to drop out of the trap. This makes life for the installer easier in terms of maintenance at the end of the project.

A disadvantage is that these traps are at least 300mm or more from the grating and are difficult to maintain in case of blockages by the house owner. Access can only be made from the bottom of the trap which is below the floor slab for maintenance, **this is a big issue in cases like condominiums and apartments.**



DURING TILING

In other words, the best of both worlds (all the advantages of both the top access and conventional floor traps) with none of their disadvantages. **It is 'Perfection At It's Very Best'.**

Complete Installation of All Access Floor Trap

The diagram illustrates the cross-section of a floor trap installation. Key components and labels include:

- Top Layer:** Tile (125mm thick).
- Structural Layers:** Concrete Screeding (BRC) (50mm thick), Floor Slab (125mm thick), and Water Proofing (125mm thick).
- Drainage Components:**
 - 40mm, 32mm Pipe Sleeve:** Connects to the kitchen sink (40mm) or bathroom basin (32mm) or washing machine.
 - End cap, Grating, Collar:** Components of the floor gully body.
 - Hair Trap:** Located in the main stack.
 - 20 uPVC PIPE:** The main vertical drain pipe.
 - uPVC electrical conduit 20mm pipe (required length):** For electrical wiring.
 - 4" uPVC pipe (required length):** The main horizontal drain pipe.
 - Connector:** Connects the horizontal pipe to the vertical stack.
 - 82mm or 50mm Pipe:** The pipe leading to the vent stack.
 - 51mm Water Seal:** Located in the main stack.
 - Extended Baffle Container:** At the bottom of the main stack.
 - Bottom Cap:** At the very bottom of the main stack.
- Other Labels:**
 - Air cond pipe (20mm):** For air conditioning.
 - To vent stack:** The path for the 82mm or 50mm pipe.
 - To Soil / Waste main stack:** The path for the 4" uPVC pipe.
 - Rib:** A structural element in the floor slab.

It has the benefits of being able to be serviced or maintained from the top (bathroom) or from below the floor slab.

It has no issues with debris or cement falling into the floor trap during the tiling process by not using the cap until after tiling.

Ease of maintenance after the owner has occupied the unit, just remove the grating and pull the adjustable baffle container out. Clean and replace back, it's as easy as that!

No back-flow or soap bubble issues at all, high flow rates and is at least 250mm from the grating.

It is further from the heat source, this will result in a longer period of protection of the water seal from evaporation.

Ideal for transfer slab use. Distance from grating to the trap can be in excess of 1 metre. This is solved by using a long handle on the baffle container.



CHEZY 3 SIDE FLOW CONCEALED FLOOR TRAP



CHEZY 3 SIDE FLOW CONCEALED FLOOR TRAP

WHY CHOOSE CHEZY 3 SIDE FLOW CONCEALED FLOOR TRAP?

This Chezy 3 Side Flow Concealed Floor Trap has flow rates in excess of 60 litres/min and has a 50mm outlet pipe. The whole trap, outlets and inlet pipes into the floor trap can be concealed in the floor slab. Maintenance and rodding of the pipe is easy. This can be done either by removing the cap of the trap insert or by totally removing the whole trap insert.

All pipes coming in or outlets are concealed in the slab, allowing for a larger space below the slab or eliminating the use of false ceilings.



ACCESSORIES AVAILABLE



Chezy In-Line Container

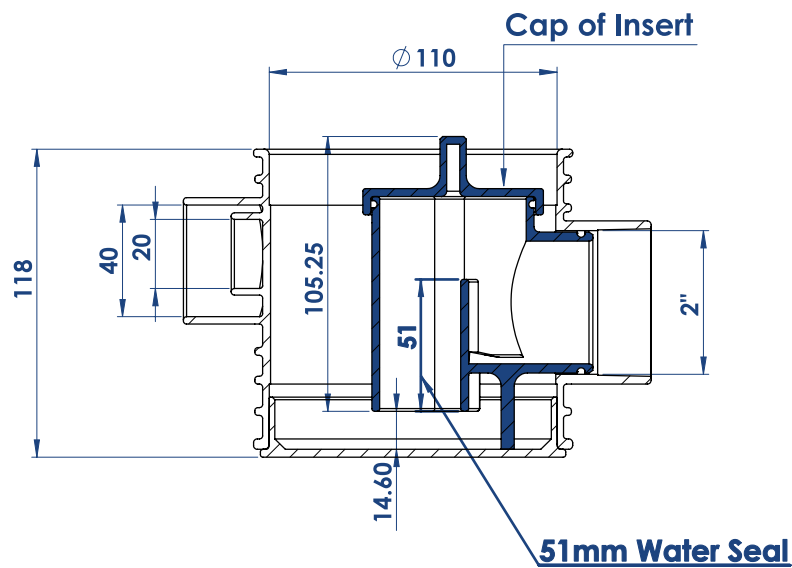
Chezy In-Line Container

Chezy 3 Side Flow Concealed Floor Trap

Main Stack

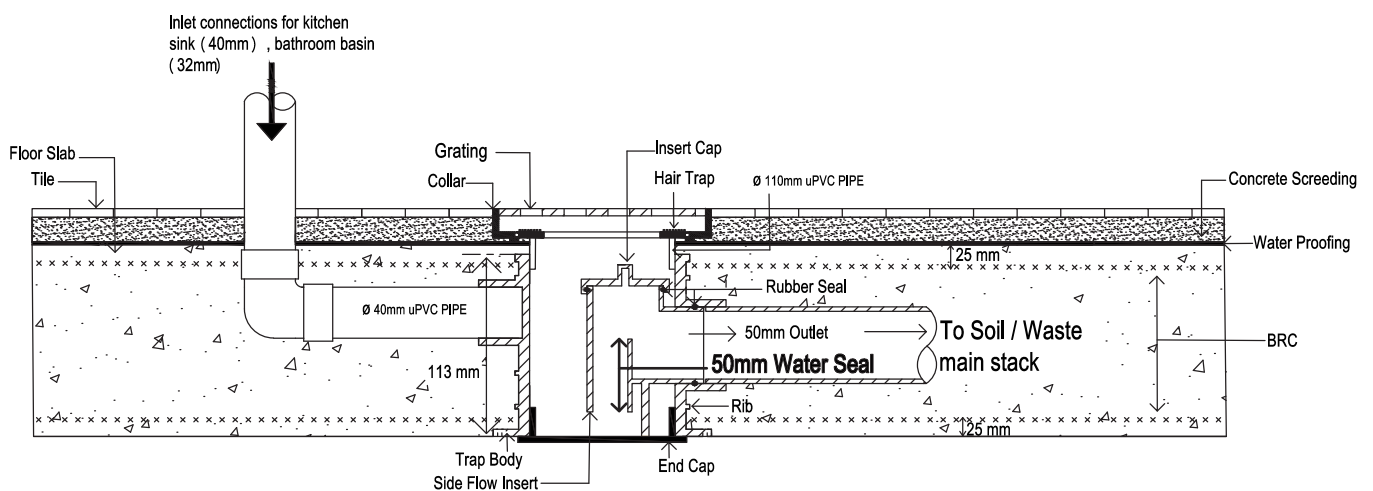
DIMENSIONS

Side Flow Concealed Floor Trap



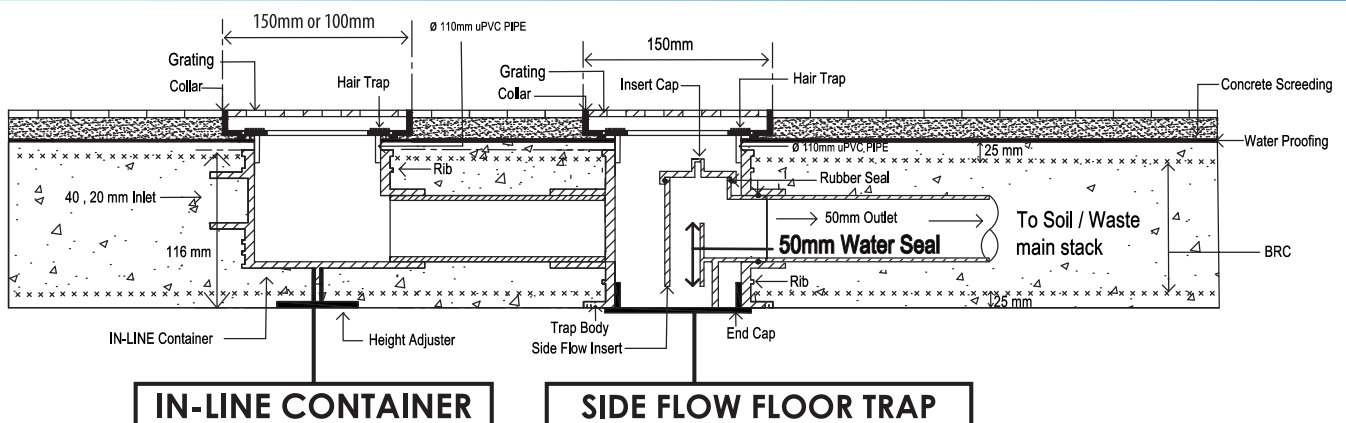
INSTALLATION DRAWING

Side Flow Concealed Floor Trap for 150mm Floor Slab



INSTALLATION DRAWING

Side Flow Concealed Floor Trap with In-Line Container



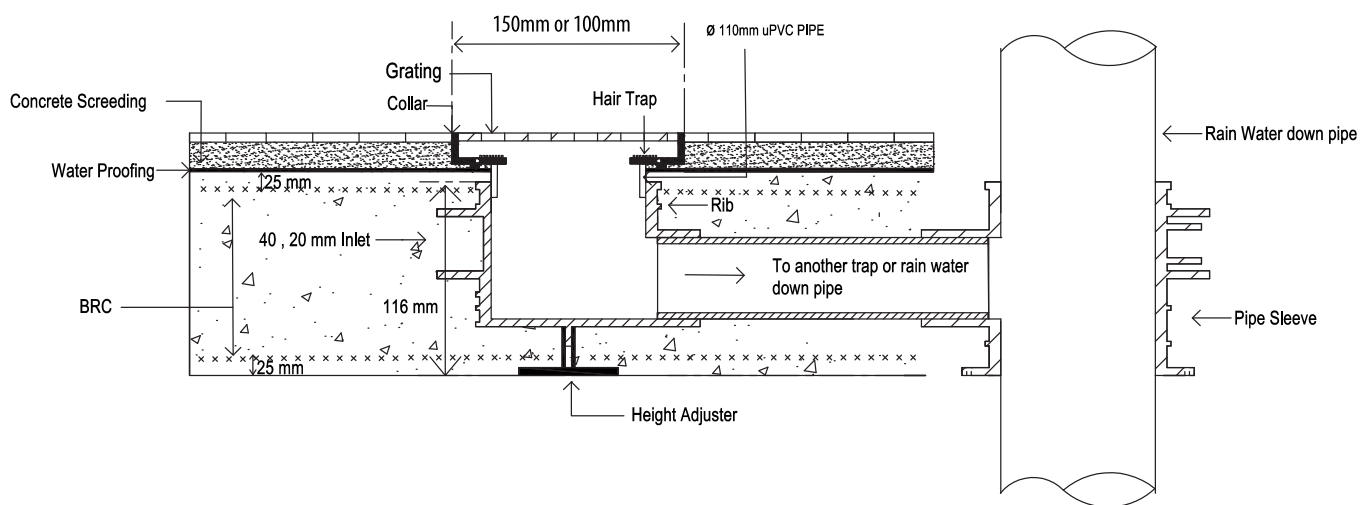


IN-LINE CONTAINER USE FOR BALCONY DRAINAGE

The Chezy In-line Container comes in 2 sizes with 50mm (2 inch) outlets. The 110mm (4 inch) in-line container is used with a 150mm (6 inch) grating and the 82mm (3 inch) in-line container accommodates a 100mm (4 inch) grating. The In-line Containers can be used in the dry part of the bathroom, kitchen or yard and connected to the floor trap. These in-line containers can be used to drain the balcony.

INSTALLATION DRAWING

In-Line Container for Balcony Drainage



Balcony Drainage

CHEZY 4 BOTTLE FLOOR TRAP

**For 4-inch
Collar (100mm)**



**For 6-inch
Collar (150mm)**



CHEZY 4 BOTTLE FLOOR TRAP



**For 6-inch
Collar (150mm)**

**For 4-inch
Collar (100mm)**

The Chezy Bottle design floor trap can be used with 150mm (6-inch) collar and gratings and also for 100mm (4-inch) collar and grating designs.

For the 150mm gratings a **110mm (4-inch) pipe sleeve is used**. For the 100mm (4-inch) gratings, a **82mm (3-inch) pipe sleeve** is used for the bottle trap.

This economical floor trap can be used for bottom outlet traps and side flow (embedded in the slab floor traps). We have Bottle traps for 150mm and 100mm collars for the floor trap.

This design cannot be used if air-conditioning pipe is connected to the Body of the pipe sleeve.

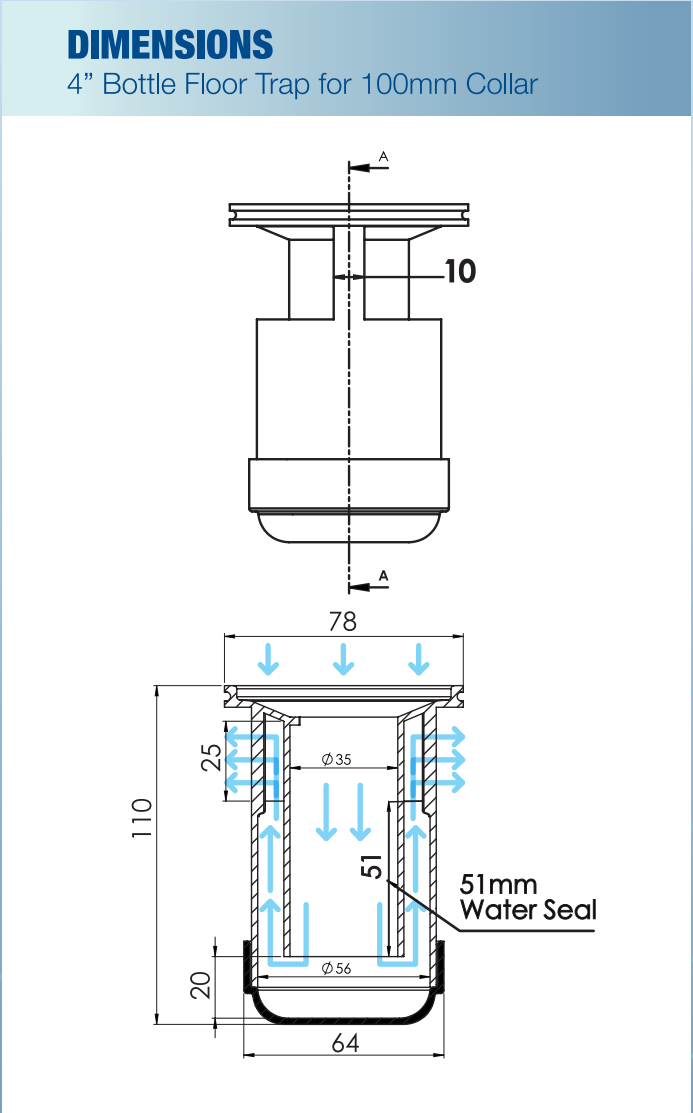
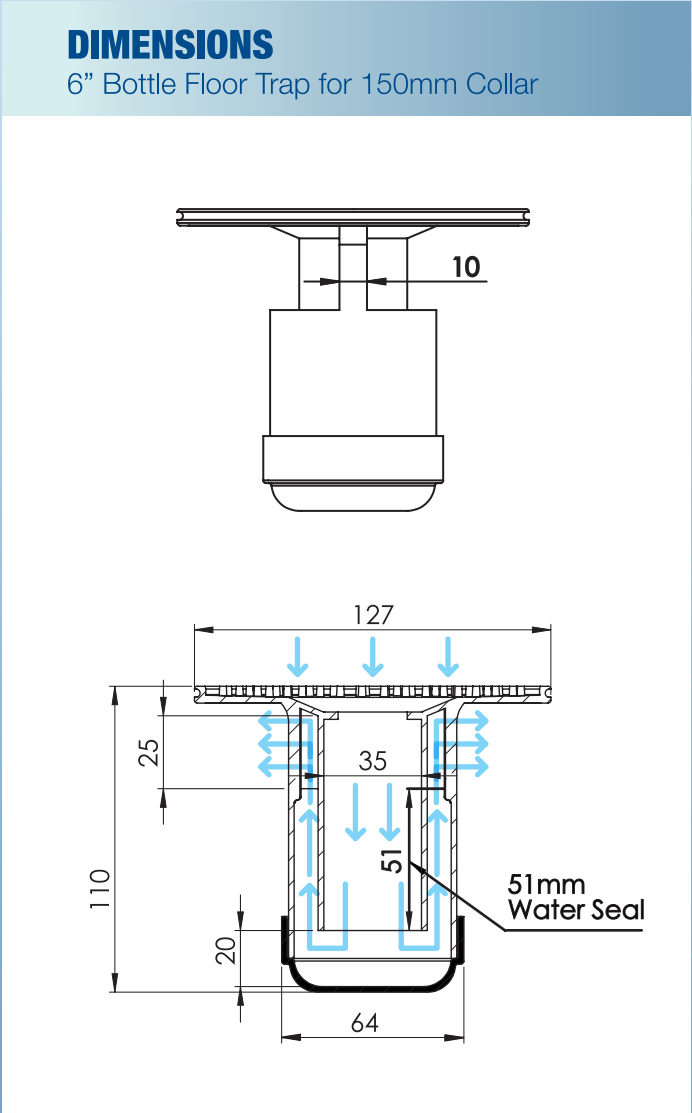


BOTTLE TRAP FLANGE SIZE	SOCKET PIPE SLEEVE OR IN-LINE CONTAINER SIZE
150mm (6-inch)	110mm (4-inch)
100mm (4-inch)	82mm (3-inch)

The flow rate for this bottle floor trap design is in excess of 52 litres/min, which is more than sufficient for your use.

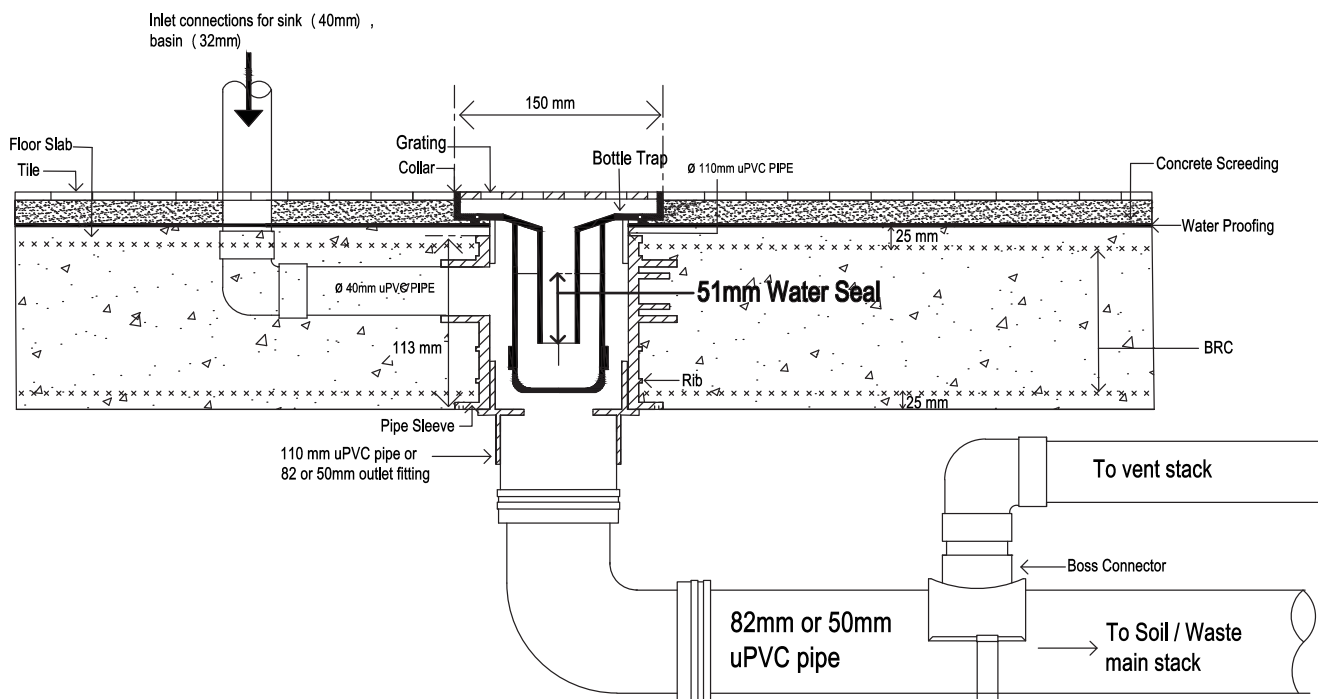
Disadvantage for this bottle floor trap design is that sanitary ware that is connected to this bottle floor trap design **must have their own traps**, that is kitchen sink, basin, etc must have their own traps.

This design cannot be used if air-conditioning pipe is connected to the Body of the pipe sleeve.



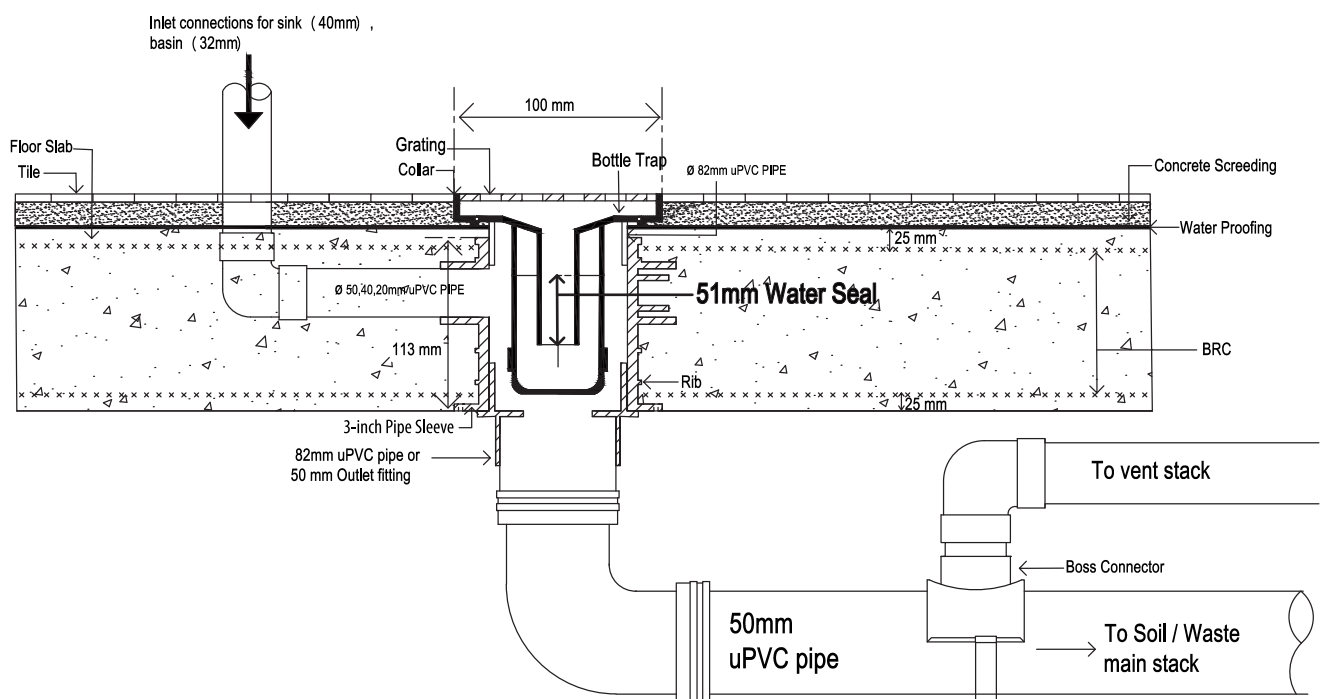
INSTALLATION DRAWING

Bottle Floor Trap for 150mm Collar with Bottom Discharge



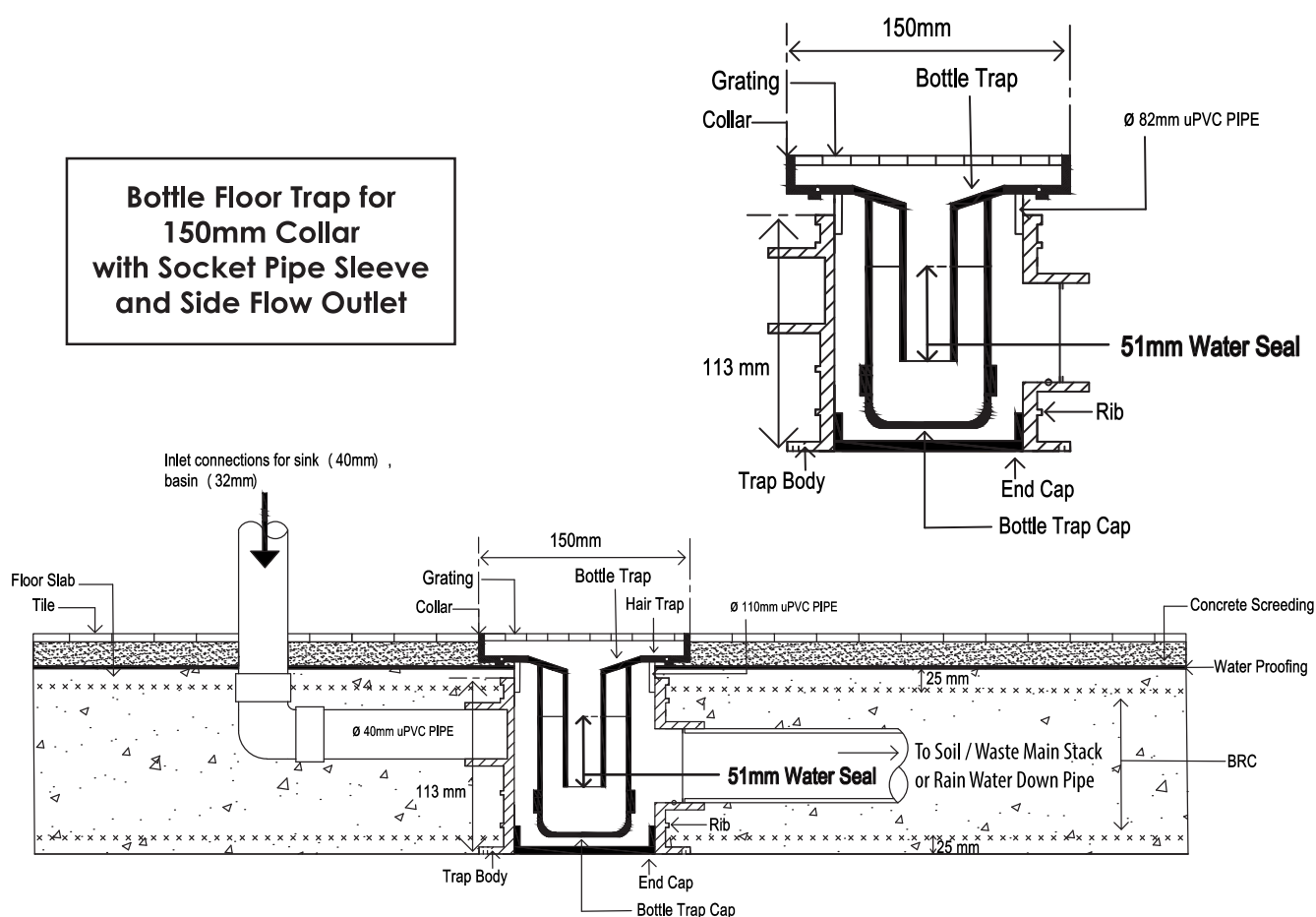
INSTALLATION DRAWING

Bottle Floor Trap for 100mm Collar with Bottom Discharge



INSTALLATION DRAWING

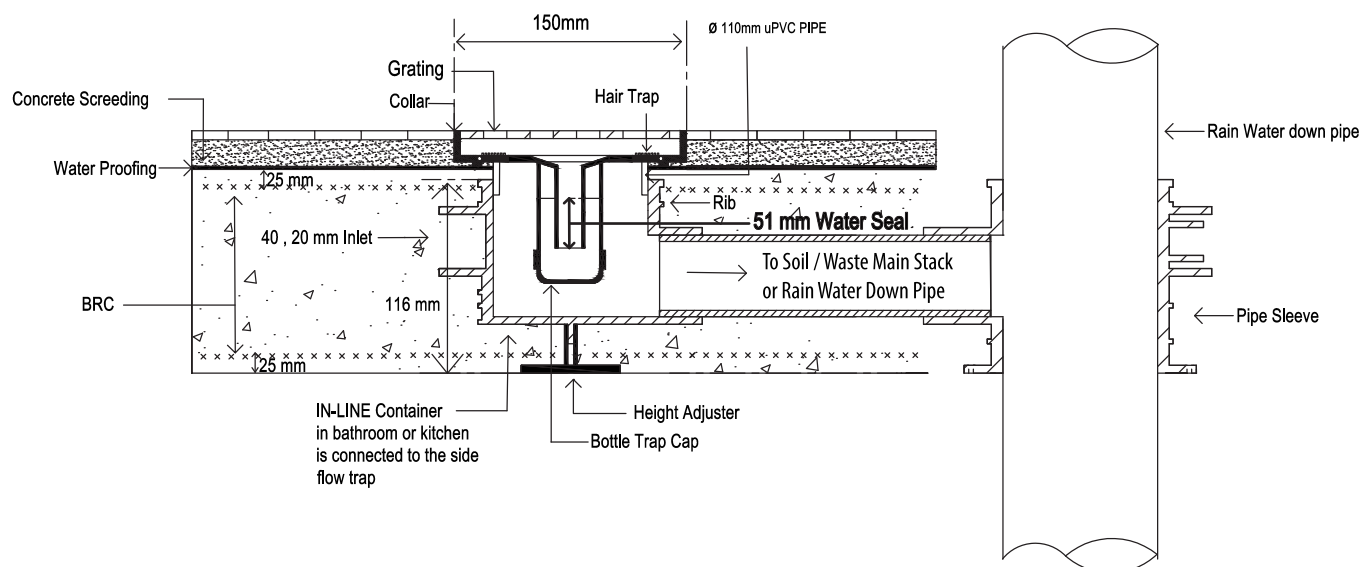
Bottle Floor Trap for 150mm Collar with Socket Pipe Sleeve and Side Flow Outlet



Bottle Floor Trap for 150mm Collar with Socket Pipe Sleeve and Side Flow Outlet

INSTALLATION DRAWING

Bottle Floor Trap for 150mm Collar with Half Body Pipe Sleeve and Side Flow Outlet



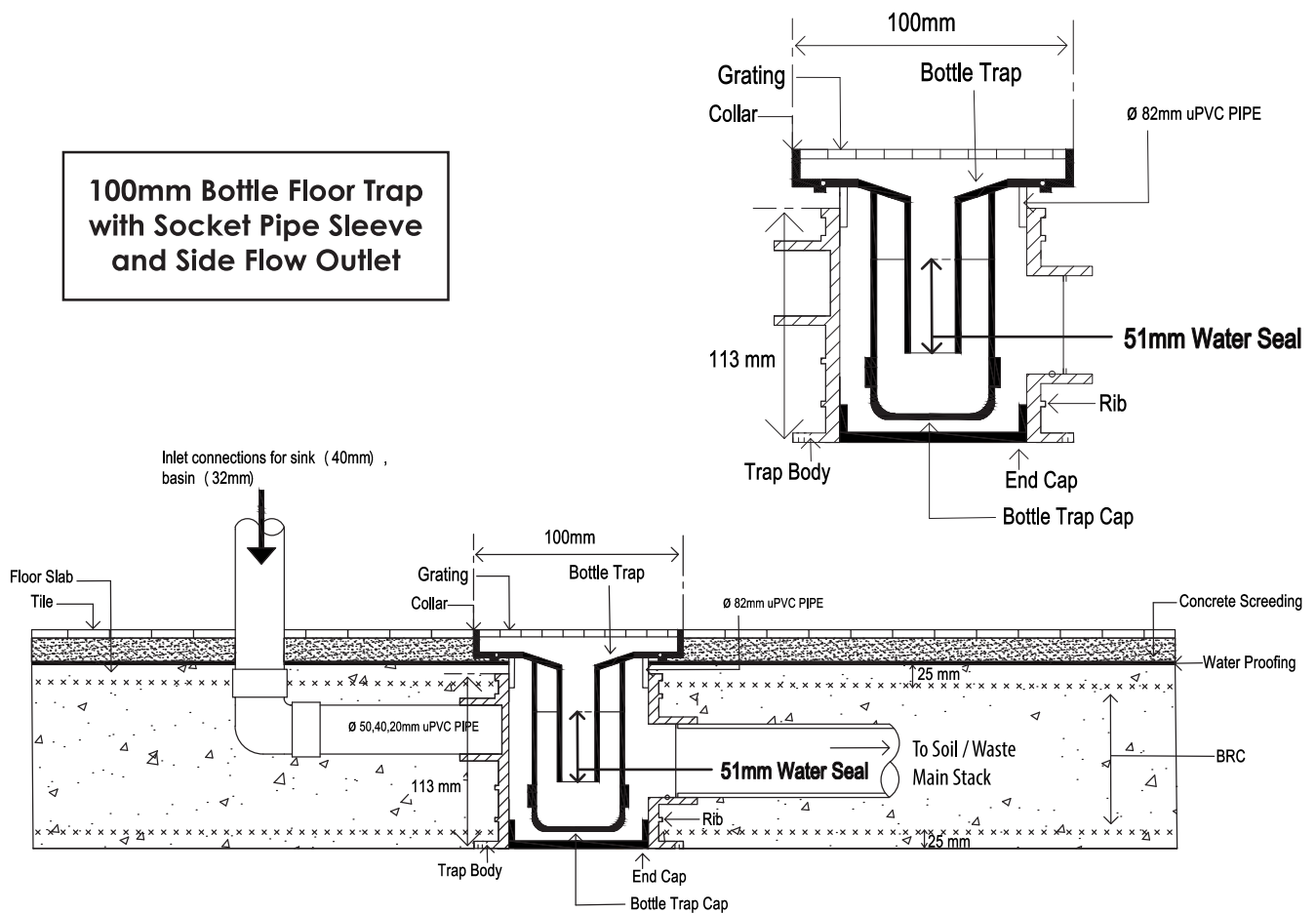
Bottle Floor Trap for 150mm Collar with Half Body Pipe Sleeve and Side Flow Outlet

NOTE : THIS DESIGN CANNOT BE USED WITH AIR-CONDITIONING PIPES.

INSTALLATION DRAWING

Bottle Floor Trap for 100mm Collar with Socket Pipe Sleeve and Side Flow Outlet

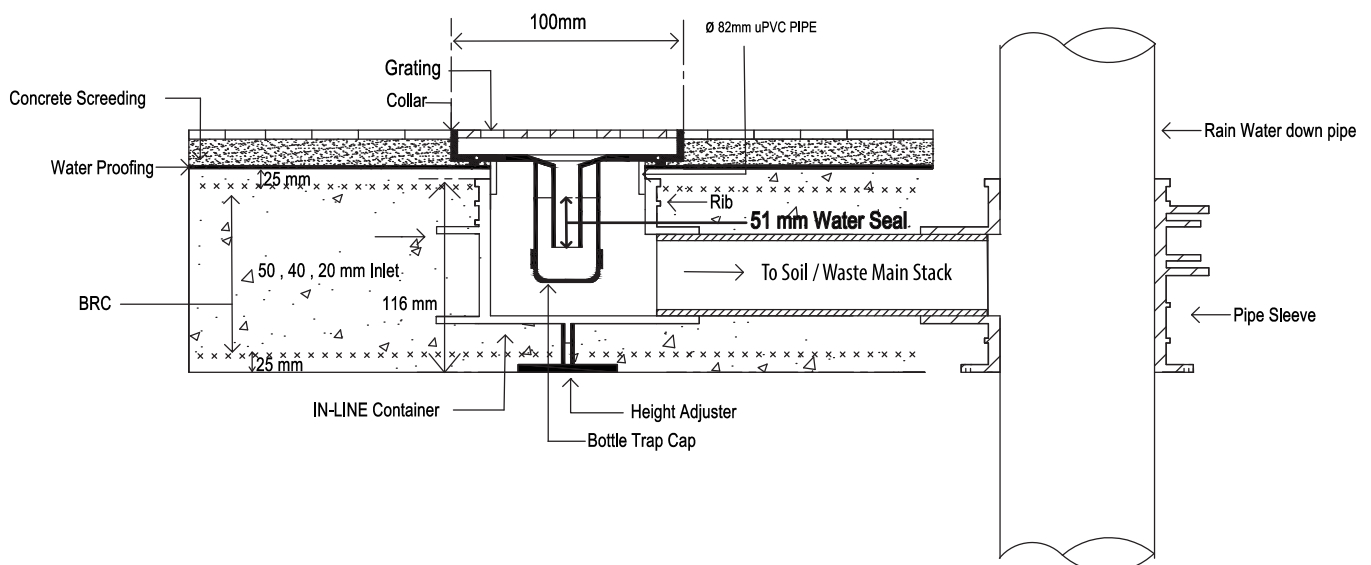
100mm Bottle Floor Trap with Socket Pipe Sleeve and Side Flow Outlet



Bottle Floor Trap for 100mm Collar with Socket Pipe Sleeve and Side Flow Outlet

INSTALLATION DRAWING

Bottle Floor Trap for 100mm Collar with Half Body Pipe Sleeve and Side Flow Outlet



Bottle Floor Trap for 100mm Collar with Half Body Pipe Sleeve and Side Flow Outlet

NOTE : THIS DESIGN CANNOT BE USED WITH AIR-CONDITIONING PIPES.

CHEZY 5 CONVENTIONAL FLOOR TRAP



CHEZY 5 CONVENTIONAL FLOOR TRAP

The Chezy 5 Conventional Floor Trap has flow rates in excess of 80 litres/min.

These conventional floor traps are placed below the floor slab and can have 3 connections to allow for basin, kitchen sink, long bath and air-conditioning water discharge pipes.

According to British and European standards, **the water seal must be a minimum of 50mm.**



ADVANTAGES

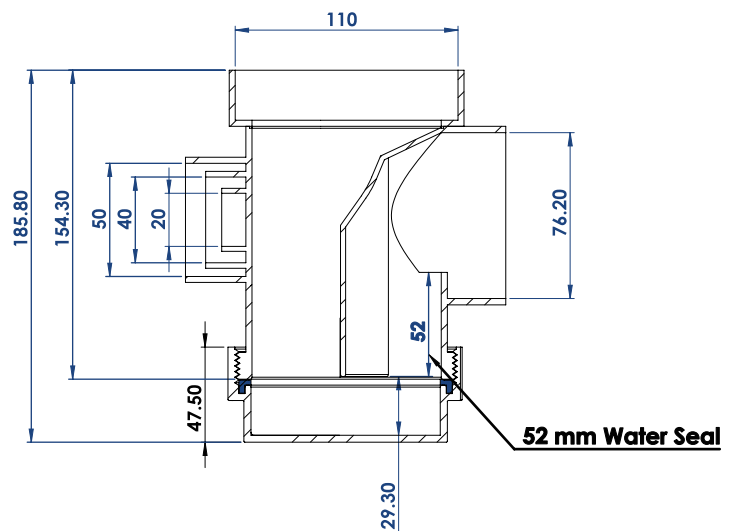
This floor trap design are accessible from the bottom by unscrewing the cap at the bottom for cleaning blockages and for rodding purposes.

DISADVANTAGES

They cannot or are difficult to service from the top. This is especially difficult in high rise buildings as owners in lower floors may not allow access for servicing of the floor trap for the floor above.

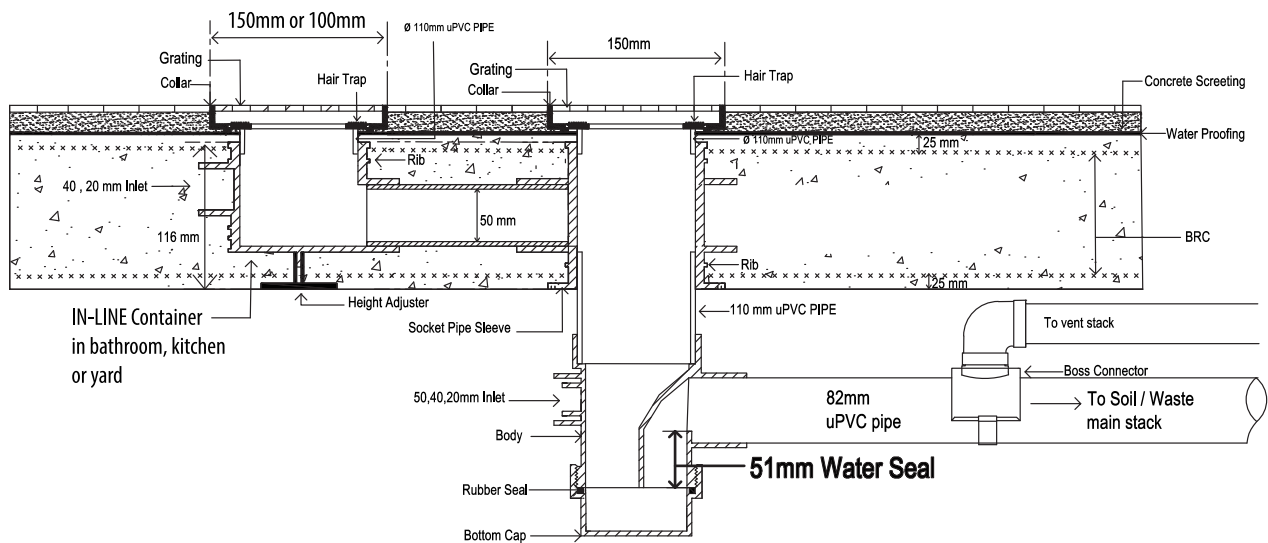
DIMENSIONS

Conventional Floor Trap



INSTALLATION DRAWING

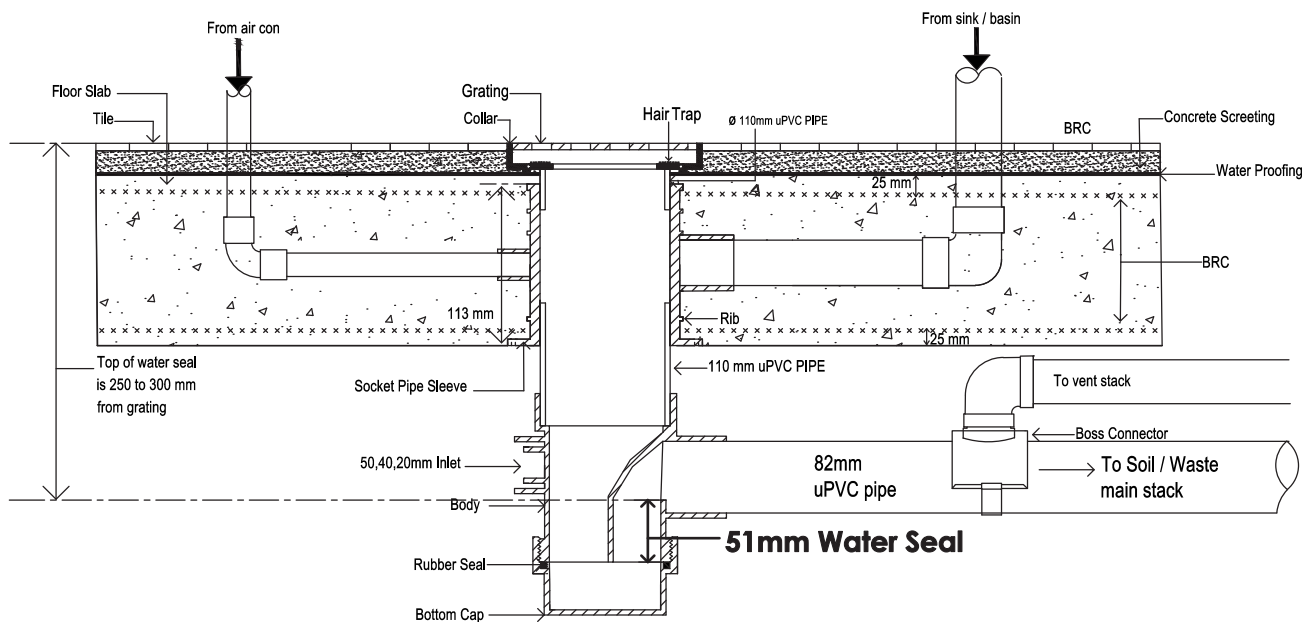
Conventional Floor Trap with Chezy In-Line Container



Conventional Floor Trap with Chezy In-Line Container

INSTALLATION DRAWING

Conventional Floor Trap for 150mm Floor Slab



Conventional Floor Trap For 150mm Floor Slab

CHEZY FLOOR TRAP ACCESSORIES



CHEZY FLOOR TRAP ACCESSORIES

BY USING CHEZY COLLARS, IT ALLOWS YOU TO USE OUR ACCESSORIES LIKE ANTI BACKFLOW DEVICES, ANTI SOAP BUBBLE DEVICES, BOTTLE TRAP AND ETC. NO HOUSEHOLD COMPLAINTS. NO HEADACHES - WE HAVE ALL THE SOLUTIONS.

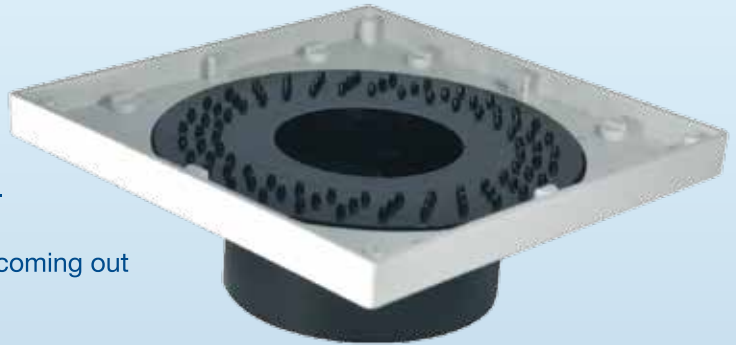
ANTI BACK FLOW DEVICE FOR TOP ACCESS FLOOR TRAP

We now have an additional feature (this patented new feature) which not only traps hair and other debris, it prevents any backflow of water out of the floor trap through the grating onto the floor.

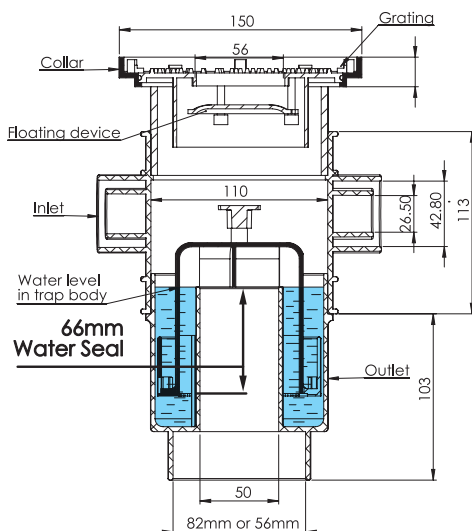
Presently, all available top access floor trap brands in the market have the problem of water coming out of the grating. This happens if a twin bowl kitchen sink is discharged simultaneously from both bowls into the trap.

The high volume of water discharged will result in water coming out of the grating and onto the floor.

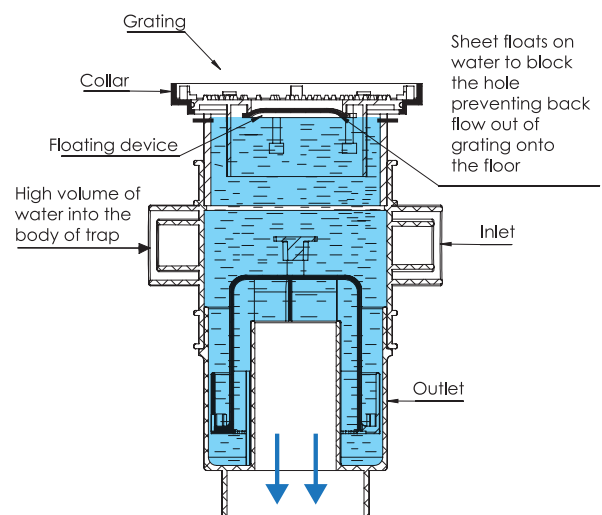
Our Chezy Backflow Device eliminates this problem with **No Backflow of Water!**



ANTI BACK FLOW DEVICE WHEN NOT IN USE



ANTI BACK FLOW DEVICE IN USE



BY USING CHEZY COLLARS, IT ALLOWS YOU TO USE OUR ACCESSORIES LIKE ANTI BACKFLOW DEVICES, ANTI SOAP BUBBLE DEVICES, BOTTLE TRAP AND ETC. NO HOUSEHOLD COMPLAINTS. NO HEADACHES - WE HAVE ALL THE SOLUTIONS.



**ANTI SOAP BUBBLE DEVICE
FOR CHEZY FLOOR TRAPS**

Anti Soap Bubble device for kitchen sink and washing machine. The perfect accessory to use with Chezy Collars to prevent soap bubbles from coming out of the grating of the floor traps from kitchen sinks and washing machines.



**SOCKET PIPE SLEEVE
FOR CHEZY FLOOR TRAPS**

Our socket pipe sleeves are used in the floor slab. These are used for uPVC pipes that are placed in the slab. Maximum pipe size that can be used in the slabs are up to 50mm. The inlets into the sockets pipe sleeve are for 20mm, 32mm, 40mm and 50mm uPVC pipes.



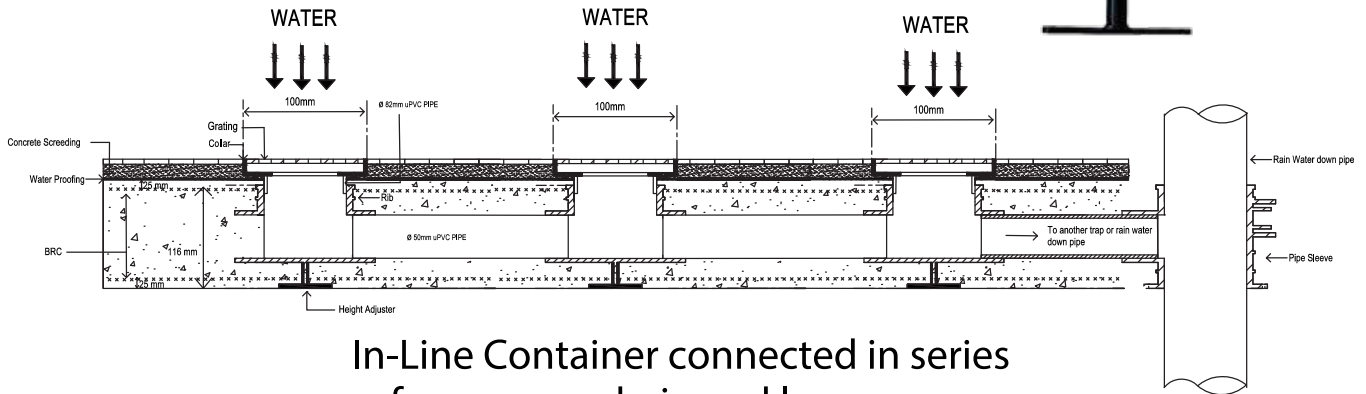
**IN-LINE CONTAINER
FOR CHEZY FLOOR TRAPS**

The Chezy In-line Container comes in 2 sizes with 50mm (2 inch) outlets. The 110mm (4 inch) in-line container is used with a 150mm (6 inch) grating and the 82mm (3 inch) in-line container accomodates a 100mm (4 inch) grating. The In-line Containers can be used in the dry part of the bathroom or kitchen and connected to the floor trap or joined in series for scupper drains to drain large areas.

COLLAR & GRATING SIZE	SOCKET PIPE SLEEVE OR IN-LINE CONTAINER SIZE
150mm (6-inch)	110mm (4-inch)
100mm (4-inch)	82mm (3-inch)

INSTALLATION DRAWING

In-Line Container connected in series



In-Line Container connected in series
for scupper drain and large areas

BY USING CHEZY COLLARS, IT ALLOWS YOU TO USE OUR ACCESSORIES LIKE ANTI BACKFLOW DEVICES, ANTI SOAP BUBBLE DEVICES, BOTTLE TRAP AND ETC. NO HOUSEHOLD COMPLAINTS. NO HEADACHES - WE HAVE ALL THE SOLUTIONS.



Chezy In-Line
Container

Chezy In-Line
Container

Rain Water
Down Pipe

COMPREHENSIVE LABORATORY FOR QUALITY CONTROL



PROVIDING CUSTOMERS HIGH QUALITY AND TRUSTED CHEZY PRODUCTS

For more information, please contact our trained professionals and engineers.



CHEZY INDUSTRIES SDN BHD

No. 22, Jalan Uranus AK U5/AK, Taman Subang Impian, Seksyen U5, 40150 Shah Alam, Selangor Darul Ehsan
Tel : 03 - 7859 9499 Fax : 03 - 7832 1655 Email : enquiry@chezy.com.my Website : www.chezy.com.my

All brand and/or product names are trademarks of their respective owners. Specifications and external appearance are subject to change without notice. The actual product may vary from images shown in the brochure. The images in this brochure are not real photographs and may have slight differences in detail might appear. Copyright © 2019 Chezy Industries Sdn Bhd. All rights reserved. This brochure, its contents and/or layout may not be modified and/or adapted, copied in part or in whole and/or incorporated into other works without the prior written permission of Chezy Industries Sdn Bhd.